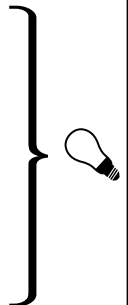
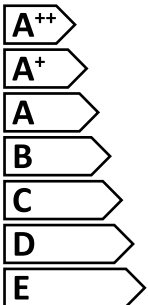


smartwares® ES49Z



This luminaire is compatible with bulbs of the energy classes:



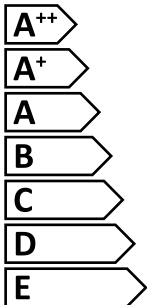
874/2012



smartwares® ES49Z



Diese leuchte ist für Leuchtmittel der Energieklassen geeignet:



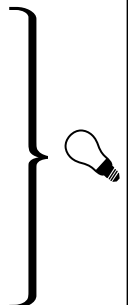
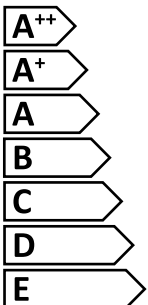
874/2012



smartwares® ES49Z



In deze armatuur passen lampen van energieklassen:



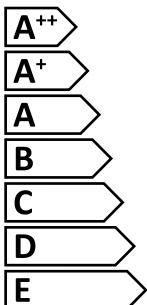
874/2012



smartwares® ES49Z



Ce luminaire est compatible avec les ampoules des classes énergétiques:



874/2012



IP44



www.smartwares.eu	Smartwares SAFETY & LIGHTING	NL : 0900-208888	lokale tarief
		BE : 070-230301	lokale tarief
	Broekakerweg 15	FR : 0825 560 650	15ct/min
	5126 BD Gilze	DE : +49 (0) 1805 010762	
	The Netherlands	14ct./Min. dt. Festnetz	
		Mobil max. 42ct./Min	
		UK : +44 (0) 345 230 1231	
		ES : +34 938427589	

CUSTOMER SERVICE

10.020.77-20141218:GAL4A



smartwares®



INDOOR AND
OUTDOOR



MOTION
DETECTION

100

WATT
MAX.



±110°
MAX. 12M

outdoor light with motion detector

GB Outdoor light with 110°
passive infrared detector

DE Außenleuchte mit 110°
P.I.R Bewegungsmelder

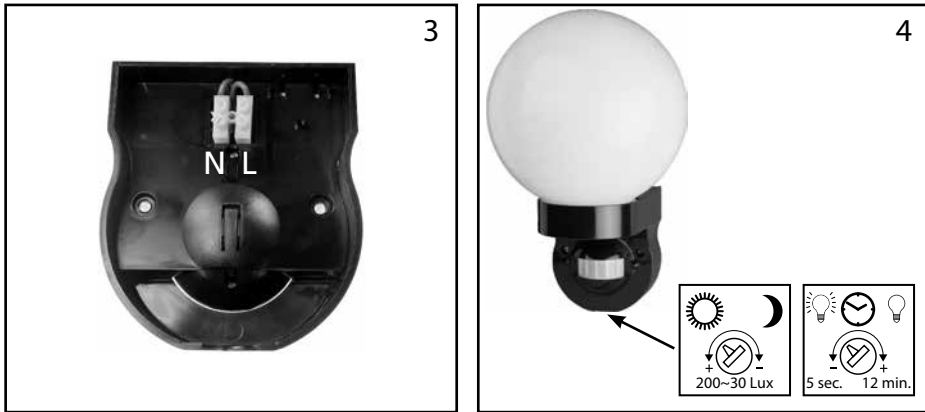
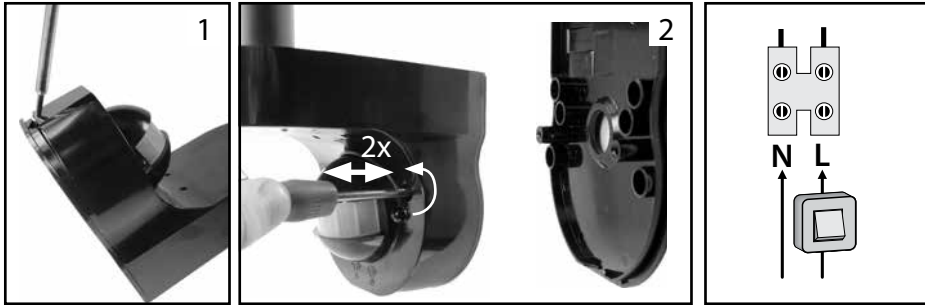
PL Oświetlenie zewnętrzne z pasywnym
dedektorem podczzerwieni o kącie 110°

NL Buitenverlichting met 110°
P.I.R. bewegingsmelder

FR Applique murale extérieure avec
decteur de mouvement angle 110°

ES Luz exterior con detector infrarrojo
pasivo y ángulo de acción de 110°

ES49Z / 10.020.77



ES49Z / 10.020.77

POWER	220-240V~ 50Hz
WATTAGE	100W incandescent lamp
PROTECTION CLASS	IP44
DIMMABLE	NO
ISOLATION CLASS	II