



5  
WATT

220  
LUMEN

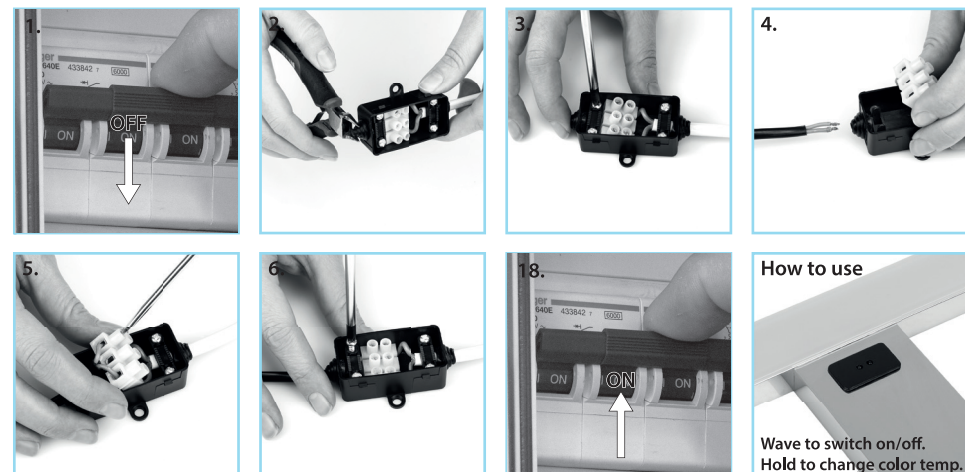


## LED bathroom light

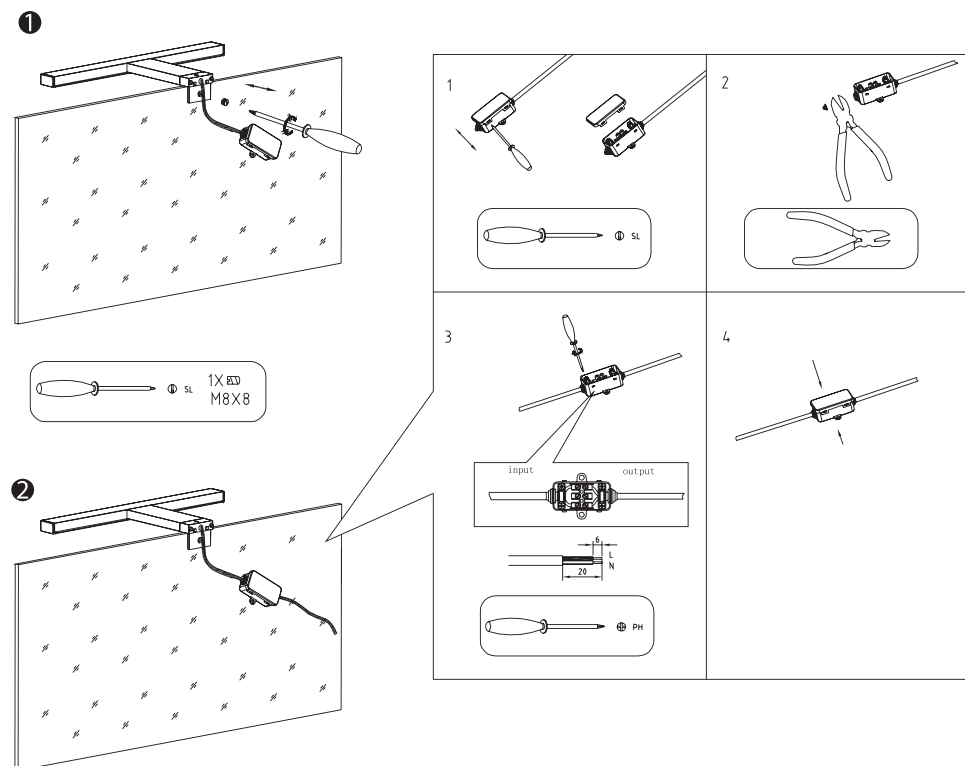
DE LED Bad Spiegelleuchte NL LED Badkamerlamp FR Lampe LED de salle de bain  
ES Luz de cuarto de baño IT Lampada per il bagno PT Candeeiro para casa de banho  
SV Badrumsbelysning TR LED banyo lambasi PL Światło LED łazienkowe

IWL-60014 + IWL60015

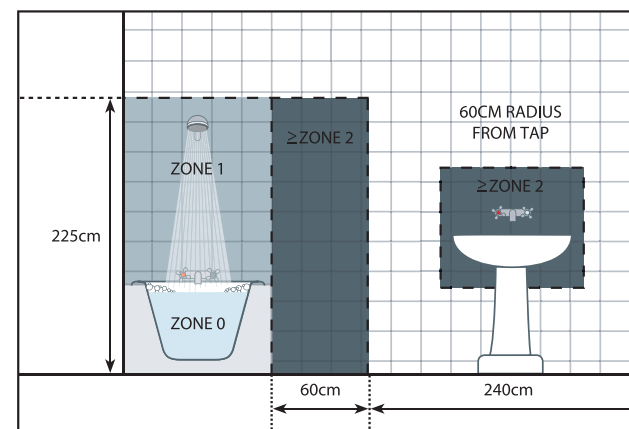
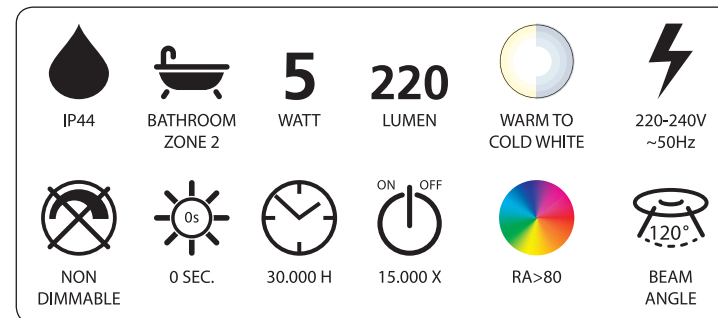
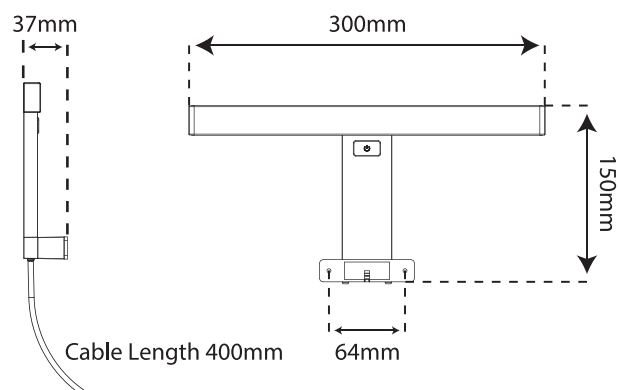
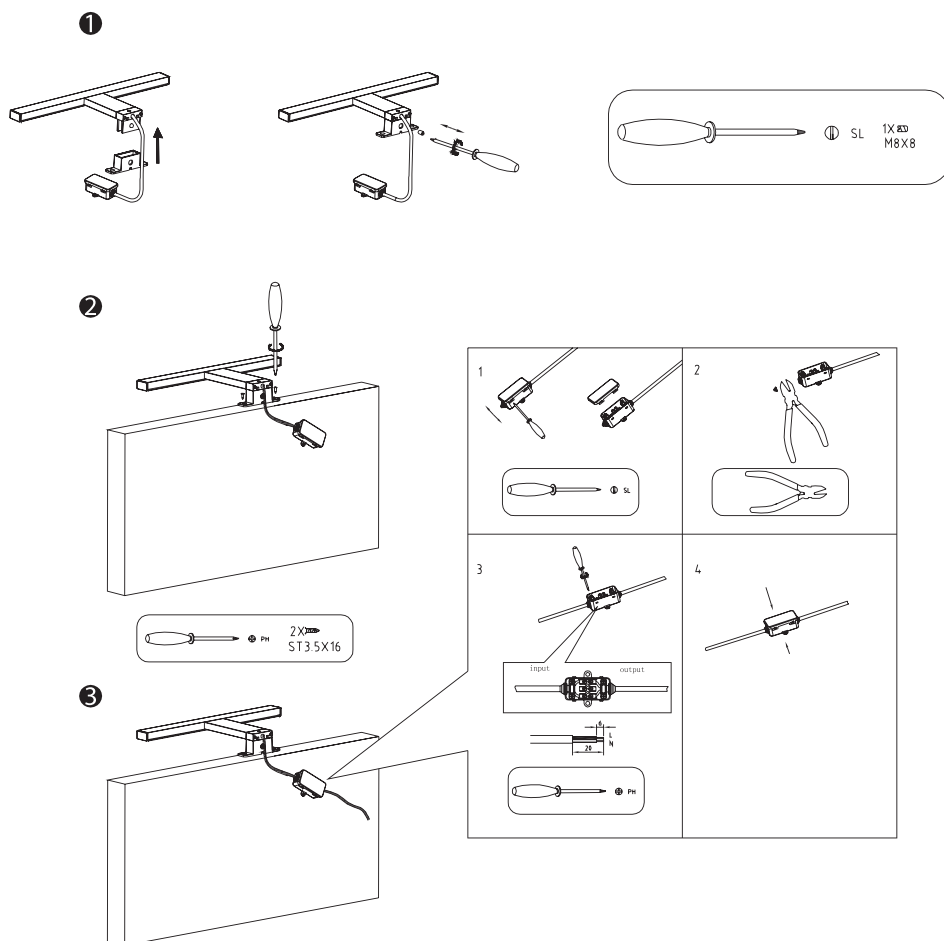
## Installation



## Mirror mounting



## Cabinet mounting



IP44

- GB** The fixture is splash-proof.
- NL** Het armatuur is spatwaterdicht.
- F** L'armature est étanche aux projections d'eau.
- D** Die Armatur ist spritzwasserdicht.
- N** Armaturet er beskyttet mot sprut.
- S** Armaturen är tät mot stänkvatten.
- DK** Armaturet er stænktæt.
- FIN** Valaisin on roiskevedenpitävä.
- PL** Urządzenie jest bрызgoszczelne.
- RUS** Осветительная арматура является брызгозащитной.
- BG** Осветителното тяло е устойчиво на намокряне.
- H** A szerelvény fröccsenésálló.
- RO** Corpul de iluminat este rezistent la stropire.
- SK** Zariadenie je chránené proti postriekaniu.
- HR** Svjetiljka je zaštićena protiv štrcanja vode.
- CZ** Zařízení je chráněno proti postřiku.
- SLO** Nosilec je odporen proti curkom.
- I** La lampada è protetta contro gli spruzzi d'acqua.
- P** A ferragem de conexão é a prova de salpicos.
- E** El montaje está protegido contra salpicaduras.
- GR** Η εφαρμογή είναι αδιάβροχη στα πισιλίσματα.
- TR** Tertibat sıçramalara karşı dayanıklıdır.

IP44

|   |   |  |
|---|---|--|
| <b>smartwares Europe</b><br>Jules Verneweg 87<br>5015 BH Tilburg<br>The Netherlands<br><a href="http://www.smartwares.eu">www.smartwares.eu</a> | NL : 088 5940501 Lokaal tarief<br>BE : 078 481094(NL) Lokaal tarief<br>BE : 078 481540(FR) Tarif local<br>FR : 0825 560 650 18ct/min<br>DE : +49 (0) 1805 010762<br>14Ct./Min. dt. Festnetz,<br>Mobil max. 42Ct./Min<br>UK : +44 (0) 345 230 1231<br>ES : +34 938427589 |  |
|   | <b>CUSTOMER SERVICE</b>   |  |
|   |   |  |
|   |   |  |
|   |   |  |