

IP44

- GB The fitting is splash-proof.
- NL Het armatuur is spatwaterdicht.
- F L'armature est étanche aux projections d'eau.
- D Die Armatur ist spritzwasserdicht.
- S Armaturen är tät mot stänkvatten.
- DK Armaturet er stænktaet.
- FIN Valaisin on roiskevedenpitävä.
- PL Urządzenie jest bryzgoszczelne.
- RUS Осветительная арматура является брызгозащитной.
- BG Осветителното тяло е устойчиво на намокряне.
- H A szerelvény fröccsenésálló.
- RO Corpul de iluminat este rezistent la stropire.
- SK Zariadenie je chránené proti postriekaniu.
- HR Svjetiljka je zaštićena protiv štrcanja vode.
- CZ Zařízení je chráněno proti postřiku.
- SLD Nosilec je odporen proti curkom.
- I La lampada è protetta contro gli spruzzi d'acqua.
- P A ferragem de conexão é a prova de salpicos.
- E El montaje está protegido contra salpicaduras.
- GR Η εφαρμογή είναι αδιάβροχη στα πιτσιλιώματα.
- TR Tertibat sıçramalara karşı dayanıktıdır.

IP44

1x LED
0.06W
white

1x LED
0.06W
rgb

1x CR2025
Lithium
3V DC

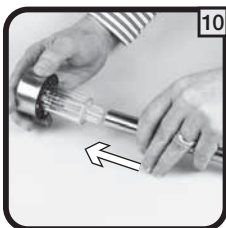
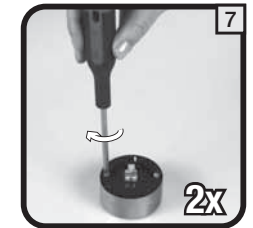
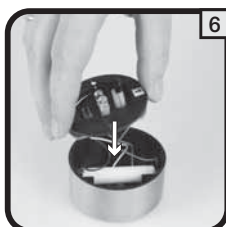
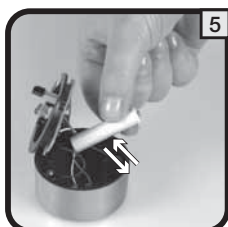
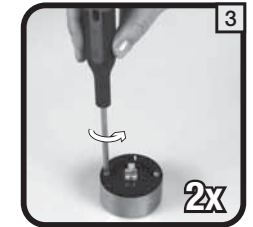
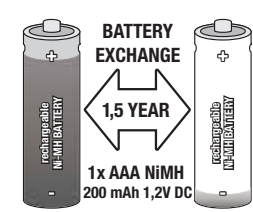
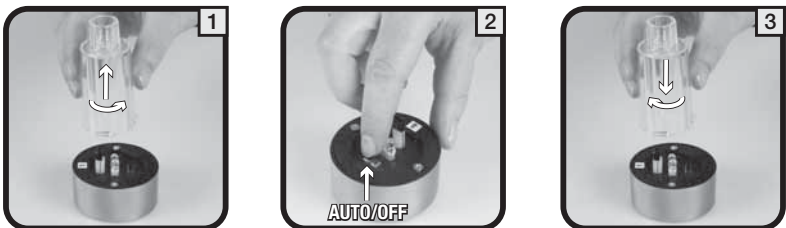
4x1 AAA
NiMH 1.2V DC
200 mAh

GUARANTEE
2 YEARS



smartwares	NL : 0900-2088888	lokaal tarief
sales & lighting	BE : 070-233031	lokaal tarief
	F : 0825 560 650	15ct/min.
Broekakkerweg 15	DE : +49 (0) 1805 010762	
5126 BD Gilze	14CL/Min. dlt. Festnetz,	
The Netherlands	Mobil max. 42CL/Min	
	UK : +44 (0) 345 230 1231	
WWW.RANEX.EU	ES : +34 938427589	

20150120.5000.402.GA.JB

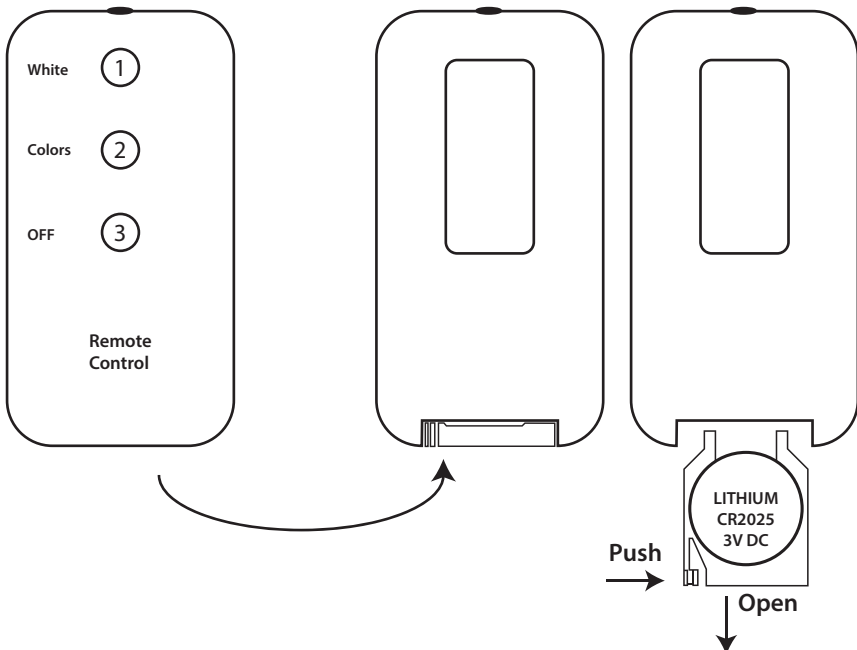


sunshine hours - heures de soleil
Sonnenlichtstunden - zonuren

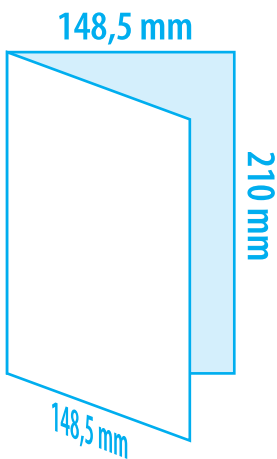
lighting time - heures d'éclairage
Brennstunden - branduren



Remote control



PLEASE PRINT DOUBLE SIDED ON A4-PAPER
AND FOLD IN MIDDLE



BACK

FRONT

INSIDE PAGES