

# smartwares® RM174RF

CE 0359  
RM174RF-002CPR  
15  
Fire Safety EN14604:2005/AC:2008



Optional:  
FOT-143  
Remote control

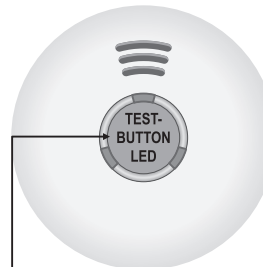


EN Smoke alarm device / Manual  
DECLARATION OF PERFORMANCE - DoP  
www.smartwares.eu/dop and follow the instructions.  
DE Rauchwarnmelder / Gebrauchsanweisung  
LEISTUNGSERKLÄRUNG - DoP  
www.smartwares.eu/dop und folgen Sie den Anweisungen.  
FR Détecteur de fumée / Mode d'emploi  
DECLARATION DE PERFORMANCE - DoP  
www.smartwares.eu/dop et suivez les instructions.

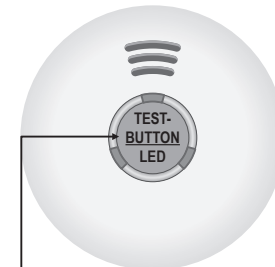
NL Rookmelder / Gebruiksaanwijzing  
VERKLARING VAN PRESTATIES - DoP  
www.smartwares.eu/dop en volg de aanwijzingen.  
ES Detector de humo / Instrucciones de uso  
DECLARACIÓN DE PRESTACIONES - DoP  
www.smartwares.eu/dop y siga las instrucciones.  
IT Rilevatore di fumo / Manuale  
DICHIARAZIONE DI PRESTAZIONE - DoP  
www.smartwares.eu/dop e seguire le istruzioni.

EN PAIRING - Wireless Connection  
DE KOPPELUNG - drahtlose Verbindung  
FR APPARIEMENT - Connexion sans fil

NL KOPPELEN - Draadloze aansluiting  
ES VINCULACIÓN - Conexión inalámbrica  
IT ASSOCIAZIONE - Connessione Wireless



1. Press button for **12 seconds** until **LED light** is continuously **ON**



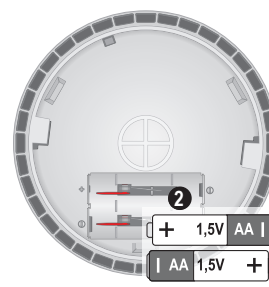
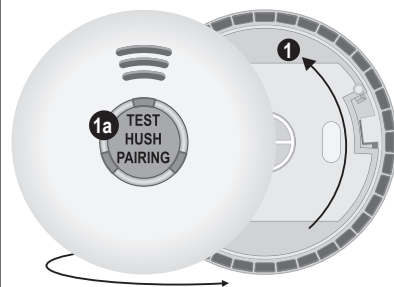
2. Press and **hold** button until the **LED blinks**, then release at once.

## INTENDED USE: FIRE SAFETY | ESSENTIAL CHARACTERISTICS: PASSED

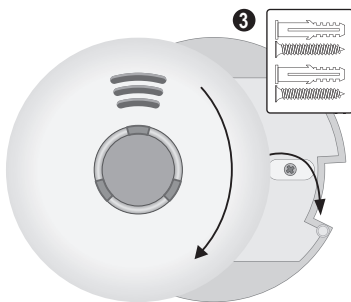
- Nominal activation conditions/ Sensitivity, Response delay (response time) and Performance under fire condition
- Operational reliability
- Tolerance to supply voltage
- Durability of operational reliability and response delay, temperature resistance
- Durability of operational reliability, vibration resistance
- Durability of operational reliability, humidity resistance
- Durability of operational reliability, corrosion resistance
- Durability of operational reliability, electrical stability

smartwares Europe	NL: 088 5940501	Lokaal tarief
	BE: 078 481094(NL)	Lokaal tarief
Jules Verneweg 87 5015 BH Tilburg The Netherlands	FR: 078 481540(FR)	Tarif local
	FR: 0825 560 650	18ct/min
www.smartwares.eu	DE: +49 (0) 1805 010762	
		14ct./Min. dt: Festnetz, Mobil max. 43ct./Min
	UK: +44 (0) 345 230 1231	
	ES: +34 938427589	

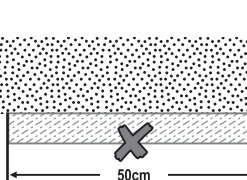
CUSTOMER SERVICE



EN Ceiling \* DE Decke \* FR Plafond  
NL Plafond \* ES Techo \* IT Soffitto

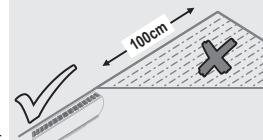


EN TEST - Press 5 seconds  
DE TESTEN - 5 Sekunden lang drücken  
FR TESTEZ - Appuyez 5 secondes  
NL TESTEN - Druk 5 seconden  
ES PRUEBA - Presione 5 segundos  
IT TEST - Premere per 5 secondi



EN Blind spot; do not mount here  
DE Blinder Fleck; hier nicht montieren  
FR Blind spot; ne rentre pas ici  
NL Dode hoek; hier niet monteren  
ES Punto ciego; no encaja aquí  
IT Angolo morto; non installare qui

EN Roof \* DE Dach \* FR Toit  
NL Dak \* ES Baca \* IT Tetto



EN Blind spot; do not mount here  
DE Blinder Fleck; hier nicht montieren  
FR Blind spot; ne rentre pas ici  
NL Dode hoek; hier niet monteren  
ES Punto ciego; no encaja aquí  
IT Angolo morto; non installare qui

EN Do not install smoke alarm device on the wall  
DE Rauchwarnmelder nicht an der Wand montieren  
FR Ne pas installer d'alarme de fumée sur le mur  
NL Monteer de rookmelder niet op de muur  
ES No instalar la alarma de humo en la pared  
IT Non installare il rilevatore di fumo sulla parete



# smartwares® RM174RF

CE 0359  
RM174RF-002CPR  
15  
Fire Safety EN14604:2005/AC:2008



Optional:  
FOT-143  
Remote control

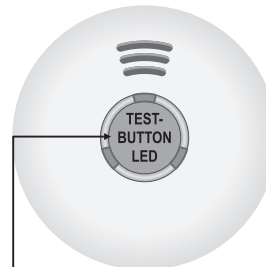


PT Dispositivo de deteção de fumo / Manual  
DECLARAÇÃO DE DESEMPENHO - DoP  
www.smartwares.eu/dop e siga as instruções.  
SV Rökklarmsenhet / Bruksanvisnin  
PRESTANDEKLARATION - DoP  
www.smartwares.eu/dop och följ instruktionerna.  
CS Detektor kouře / Návod k obsluze  
PROHLÁŠENÍ O VLASTNOSTECH - DoP  
www.smartwares.eu/dop a postupujte podle pokynů.

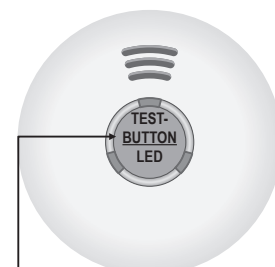
SK Detektor dymu / Manuál  
VYHLÁSENIE O VÝKONE - DoP  
www.smartwares.eu/dop a nasledujte pokyny.  
PL Czujnik dymu / instrukcje  
DEKLARACJA WYKONANIA - DoP  
www.smartwares.eu/dop i postępuj zgodnie z instrukcjami.  
TR Duman alarmı cihazı / Kılavuz  
PERFORMANS BEYANI - DoP  
www.smartwares.eu/dop ve talimatları izleyin.

PT EMPARELHAMENTO - Ligação sem fios  
SV SAMMANKOPPLING - Trådlös anslutning  
CS PÁROVÁNIE - Bezdrátové připojení

SK PÁROVANIE – Bezdrôtové pripojenie  
PL PAROWANIE – połączenie bezprzewodowe  
TR EŞLEŞTİRME - Kablosuz Bağlantı



1. Press button for 12 seconds until LED light is continuously ON



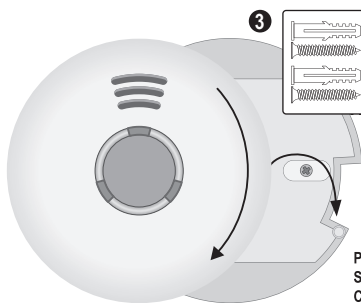
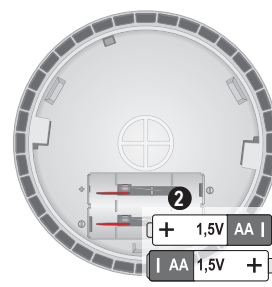
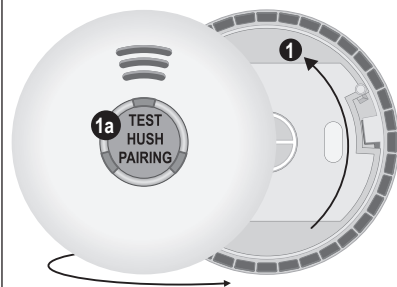
2. Press and hold button until the LED blinks, then release at once.

## INTENDED USE: FIRE SAFETY | ESSENTIAL CHARACTERISTICS: PASSED

- Nominal activation conditions/ Sensitivity, Response delay (response time) and Performance under fire condition
- Operational reliability
- Tolerance to supply voltage
- Durability of operational reliability and response delay, temperature resistance
- Durability of operational reliability, vibration resistance
- Durability of operational reliability, humidity resistance
- Durability of operational reliability, corrosion resistance
- Durability of operational reliability, electrical stability

smartwares Europe	NL: 088 5940501	Lokaal tarief
	BE: 078 481094(NL)	Lokaal tarief
Jules Verneweg 87 5015 BH Tilburg The Netherlands	FR: 0825 560 650	Tarif local
	DE: +49 (0) 1805 010762	14ct./Min. dt. Festnetz, Mobil max. 42ct./Min
www.smartwares.eu	UK: +44 (0) 345 230 1231	
	ES: +34 938427589	

CUSTOMER SERVICE



PT TESTAR - Prima 5 segundos  
SV TEST - Tryck i 5 sekunder  
CS TESTOVÁNÍ - Stiskněte na 5 sekund

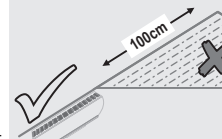
SK SKŮŠANIE - Stlačte po dobu 5 sekúnd  
PL TESTOWANIE - Naciśnij 5 sekund  
TR TEST - 5 saniye basın

PT Teto \* SV Tak \* CS Strom  
SK Strop \* PL Sufit \* TR Tavan

50cm

PT Ponto-morto; não instale aqui  
SV Blind punkt; montera inte här  
CS Misto se špatným signálem; zde jej nepřipevňujte  
SK Mrtvý uhol; nemontujte sem  
PL Ślepa plamka; Nie montowac tutaj  
TR Kör nokta; burayta monte etmeyin

PT Cobertura \* SV Tak \* CS Střecha  
SK Strecha \* PL Dach \* TR Çatı



PT Ponto-morto; não instale aqui  
SV Blind punkt; montera inte här  
CS Misto se špatným signálem; zde jej nepřipevňujte  
SK Mrtvý uhol; nemontujte sem  
PL Ślepa plamka; Nie montowac tutaj  
TR Kör nokta; burayta monte etmeyin

PT Não instale o dispositivo de deteção de fumo na parede  
SV Installera inte rökklarmsenheten på väggen  
CS Detektor kouře nemontujte na zeď  
SK Detektor dymu neinstalujte na stenu  
PL Czujnik dymu nie zamontowac go na scianie  
TR Duman alarm cihazını duvara monte etmeyin