



SW360 app instruction manual

Table of Contents

1	Introduction	3
1.1	Privacy.....	3
2	Installing the app.....	4
2.1	Creating an account.....	4
3	Adding a new device.....	5
3.1	Sharing a camera	6
4	General use	7
4.1	My device screen	7
4.2	Personal center	8
4.3	Live view screen.....	8
4.4	Settings menu	9

1 Introduction



This manual will instruct you on how to setup the SW360 app, add Smartwares cameras, adjust their settings according to your preference, and share them with your friends.

You will be able to manage and view your recordings, and even receive notifications when your camera detects motion.

- Please refer to your camera's quickstart guide on how to install your camera.
- Please check for compatibility with the SW360 app, before attempting to add your camera.

1.1 Privacy

Your e-mail address will not be used for other purposes

Your password is always encrypted and unreadable / unusable for others

The cloud (server) is only used to establish the connection. The images do not go through the cloud, but via a direct secure (encrypted) connection between camera and telephone.

The images are therefore never stored in a location other than the camera's memory card.

2 Installing the app



Before you can start using your camera, you will first need to install the SW360 app on your smartphone. The SW360 app is available for Android and iOS (Apple) devices.

- a) Open the Apple App Store, or the Google Play Store.
 - b) Search for “SW360”.
 - c) Download and install the app.
- ⇒ You can now start using the SW360 app on your smartphone.

2.1 Creating an account

Before you can add a camera to the SW360 app, you will need to log in first. If you do not already have an account, you will have to create one:

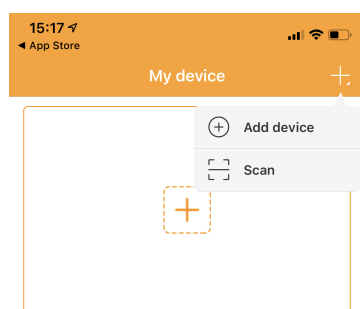
- a) Open the SW360 app on your smartphone.
 - b) Tap on “Register account”.
 - c) In the next menu, fill in your email address.

⇒ **Note:** Make sure there is no extra 'space' behind your email adress, this can be caused by using the automatic fill in function from your smartphone.
 - d) Now fill in a password. The password should be 6 to 20 characters. It is case sensitive.
 - e) Fill in the password again for confirmation.
 - f) Tap on “Confirm”.

⇒ A verification mail will now be sent to your email address.
 - g) Open the email. If you can't find the email, please check your unwanted email (spam).
 - h) Click on the link in the email to verify your account.
- ⇒ You can now log in with the account you created.

Illustration 1: Registering an account.

3 Adding a new device



[Teaching video](#)

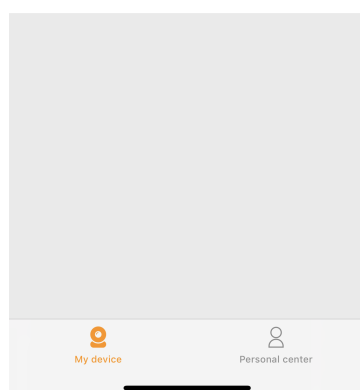
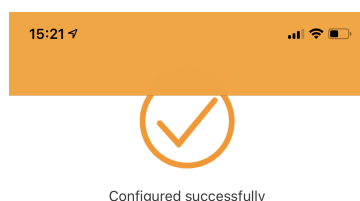


Illustration 2: Adding a new device.



Device name Name the device

Living room Master bedroom Bedroom
Study room Dining room

Done

Illustration 3: Naming your camera.

- ✓ Your camera is ready for use.
- ✓ You have installed the SW360 app, and are logged in to your account.
- ✓ You have made sure that your camera is in close range (1m) of your mobile device.
 - a) Plug in the camera with the USB adapter to power it up.
 - b) Please wait for 30 seconds until the LED on the camera starts flashing.
 - c) Open the SW360 app.
 - d) Tap the + button to start the process of adding a new camera to your account.
 - e) Tap “add device”.
 - f) Choose your camera from the list of pictures.

The following steps to add a new device are slightly different, depending on if you’re using Android or iOS. Please follow the appropriate steps for your operating system.

iOS

- a) Exit the app, and go to the Wi-Fi settings on your mobile device. The camera transmits its own private wireless network.
 - b) Connect to the Wi-Fi network SSID that corresponds to your Camera-ID. You can find the camera-ID on the sticker on the back of the camera. The password is “11111111”. Wait for your mobile device to connect to the camera's Wi-Fi network.
 - c) When you have connected successfully to the camera’s private network, return to the SW360 app.
 - d) In the SW360 app, choose the SSID of the wireless network you ultimately want to connect the camera to. Enter the corresponding password. **Note:** A 5Ghz Wi-Fi network is not supported.
 - e) The camera will now try to connect to your Wi-Fi network. Please wait.
 - f) When the connection is successful, the LED will turn green and the camera will say “Connection is successful”.
 - g) Please give your camera a name (for instance “living room”), and tap “done”.
- ⇒ Now you will be able to access your camera. You can watch the live view from anywhere in the world through the app on your mobile device.

Android

- a) Select your camera-ID from the list. You can find the camera-ID on the sticker on the back of the camera.
 - b) In the SW360 app, choose the SSID of the wireless network you ultimately want to connect the camera to. Enter the corresponding password. **Note:** A 5Ghz Wi-Fi network is not supported.
 - c) The camera will now try to connect to your Wi-Fi network. Please wait.
 - d) When the connection is successful, the LED will turn green and the camera will say “Connection is successful”.
 - e) Please give your camera a name (for instance “living room”), and tap “done”.
- ⇒ Now you will be able to access your camera. You can watch the live view from anywhere in the world through the app on your mobile device.

- **Note** (for Android): The GPS location of your smartphone should be enabled during the process of adding a device. It is needed to determine the time zone. The GPS function can be disabled again after adding a device.
- **Note:** When the installation was not successful, please use the reset button on the camera to reset the camera and try again.

3.1 Sharing a camera



Illustration 4: Opening the share function.

You can to share the live feed from your camera with a family member or a friend. They will be able to view live footage, but aren't allowed to view recordings or change the camera settings.

- ✓ You have installed the SW360 app and have added one or more cameras to your account.
 - ✓ You have a friend or family member who has also installed the SW360 app on their smartphone.
- a) Open the SW360 app.
 - b) Tap the three dots next to the name of the camera that you wish to share. A QR code will now appear on your screen.

The person who wishes to share your camera should now follow the instructions below:

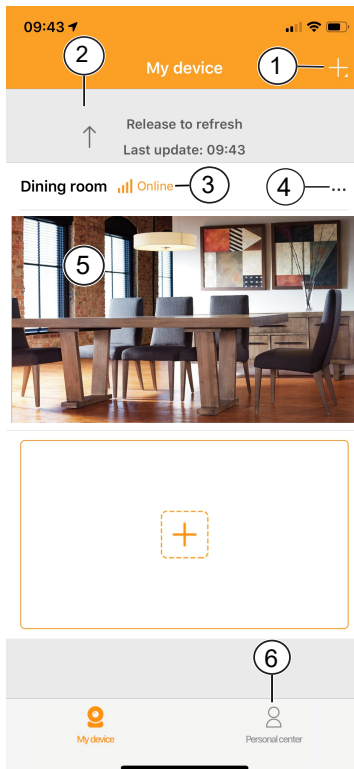
- a) Open the SW360 app.
 - b) Tap the + button to start the process of adding a new camera to your account.
 - c) Tap "Scan". The SW360 app will now access your camera.
 - d) Point your camera at the QR code on the screen of the other smartphone. The SW360 app will now automatically scan the code and add the camera.
- ⇒ Your friend or family member will now be able to access the live view from your camera.

4 General use

In this chapter we will discuss the functions of the SW360 app you will use the most:

- The my device screen
- The personal center
- The live view screen
- The settings menu

4.1 My device screen



You can take the following actions from the “My device” screen:

1. Tap the + sign to add a device, or scan a QR code from a friend or family member to share their camera.
2. Pull down on the screen to refresh the connection status.
3. Your camera’s current status.
4. Tap on the three dots symbol to go to the settings menu, to share the device, or to delete the camera from your account.
5. Tap on this preview image of your camera feed to go to the live view screen.
6. Tap to go to the Personal center.

Illustration 5: My device screen.

4.2 Personal center

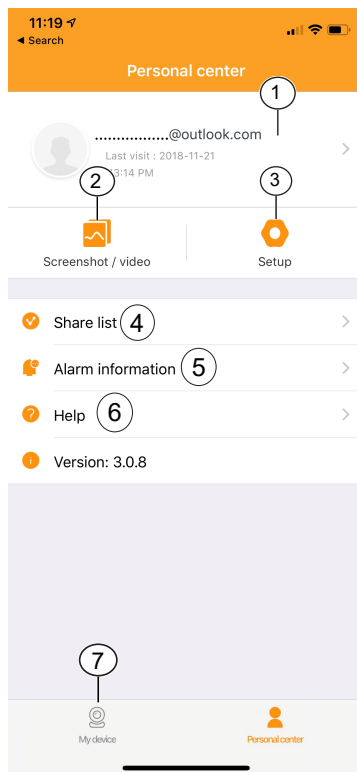


Illustration 6: Personal center

The following options are available from the Personal center:

1. Tap here to go to the Personal information screen. You can view your account information and change your password from here.
2. Tap here to go the screenshot/video gallery. You can manage and view your screenshots and recordings from the gallery.
3. Tap here to go the cellular data settings menu.
4. Tap here to go to the share list. You can view your shared devices in this list.
5. Tap to go to the alarm information menu.
6. Tap to go to the help menu. You can view the help sections, read frequently asked questions, and even watch a tutorial video.
7. Tap to go to the “My device” screen.

4.3 Live view screen

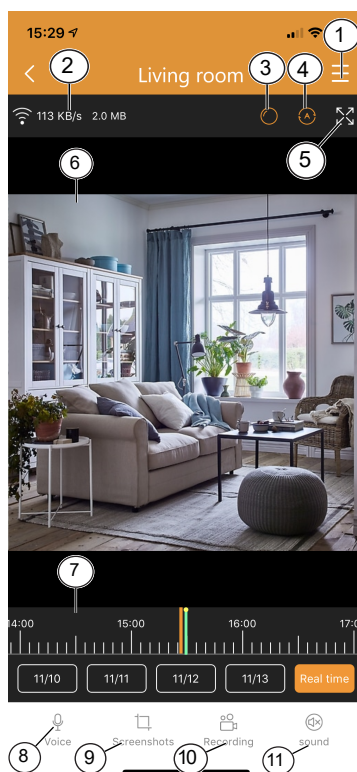


Illustration 7: Live view.

To open the live view, tap on the preview of your camera from the home screen.

From the live view screen you can watch live footage or view recordings. The following functions are available from this screen:

1. Settings menu.
2. Your data usage information.
3. Tap to switch camera perspective.
4. Tap to turn scanmode on or off. In scanmode the camera will automatically pan from left to right.
5. Tap to see a full screen landscape view of the camera feed. Tap again to go back to portrait mode.
6. Live view.
 - Drag the video feed to look around.
 - Double tap to zoom in or out. Pinch to zoom in or out.
 - When in landscape mode, tap once to view the footage fullscreen.
7. Drag this bar left and right to view your recordings. Pinch to zoom in on this bar. A orange bar indicates a recording.
 - You can also tap the dates to go back to a specific day in time. A orange bar indicates a recording. Drag this bar to the right to go back further in time.
8. Tap this button to use the voice function. Your voice will be audible through the camera's speaker.
 - **Note:** Some cameras do not offer this functionality.

9. Tap this button to make a screenshot of the live footage on the camera. You can view your screenshots from the personal center.
10. Tap this button to make a recording of the live footage on the camera. You can view your recordings from the personal center. Tap again to stop the recording.
11. Tap to mute or unmute the audio from the camera.
 - **Note:** Some cameras do not offer this functionality.

4.4 Settings menu

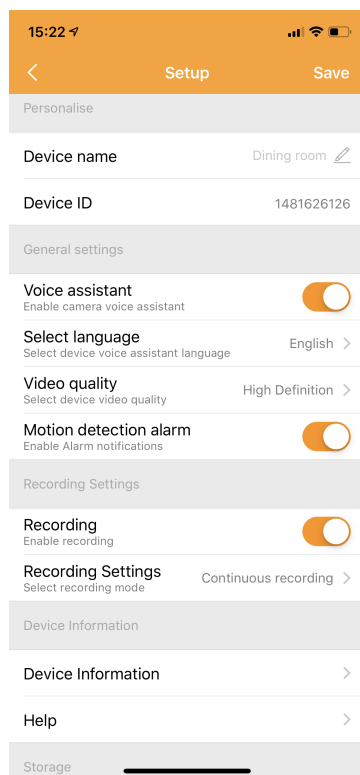


Illustration 8: Settings menu.

You can change various settings from your camera in this menu.

It's possible to:

- Change the device name.
- Turn the camera's voice assistant on or off.
- Set the language of the voice assistant.
- Choose the video quality. A higher quality will take up more memory on your MicroSD card.
- Turn motion detection notifications on or off. When this is turned on, your smartphone will give you a notification if your camera detects motion.
- Turn recording on or off.
- Choose a recording setting. You can choose to let the camera record continuously, or only when it detects motion.
- View the device information
 - You can update the camera firmware from this menu, if available.
- Access the help section.
- Check the device storage.
 - You can format your MicroSD card from this menu. You will lose all your screenshots and recordings if you choose to format.
- Turn daylight saving on or off, and choose your daylight saving area.