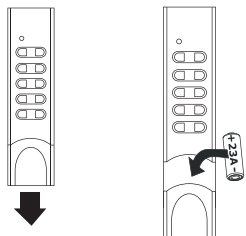


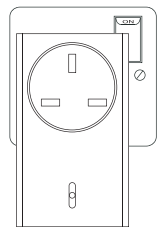
1



GETTING STARTED...

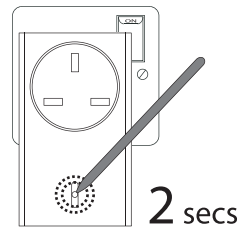
Remove the battery cover from the Remote Control. Insert the 23A battery (Supplied) into the battery holder, making sure the Positive/Negative terminals match the internal markings, then replace the battery cover on the remote control.

2

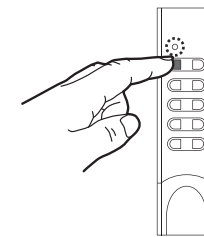


PAIRING REMOTE - SOCKET

Insert the Remote Socket into a standard 230-240V ~50Hz wall socket and switch the socket ON, the LED learn button will illuminate.

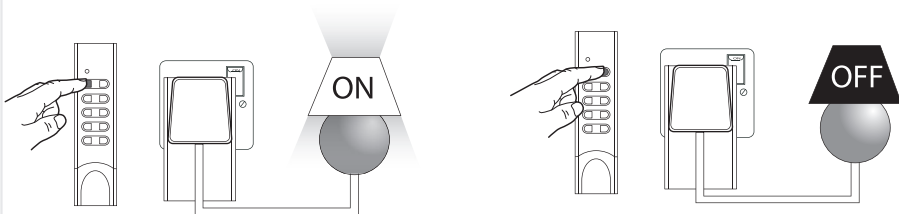


Press the 'Learn' button (2 secs) on the plug-in remote socket and release. The LED light will begin to flash to indicate that the remote socket is in learn mode.



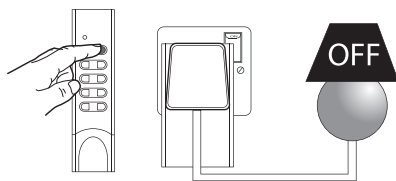
Press the 'On' button on the remote control. The LED light will stop flashing on the remote control socket. You can now control the remote control socket by using the remote control.

3



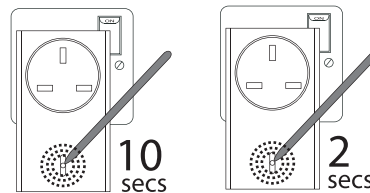
Press the 'On' button again on the remote control, with your appliance/lighting plugged into the remote control socket. The appliance /lighting should switch on.

IF THE SOCKET DOES NOT OPERATE DURING STEPS 3 PLEASE REPEAT STEP 2.



Press the 'Off' button on the remote control, with your appliance/lighting plugged into the remote control socket. The appliance /lighting should switch off.

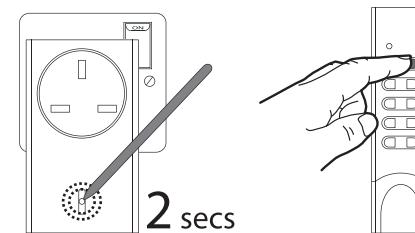
4



NOT WORKING...TRY A FACTORY RESET

Press and hold the learn button (10 secs) until the LED light on the remote socket begins to flash quickly. Release the learn button, and press again (2 secs). Then repeat steps 2 & 3 above.

5



DELETE A SINGLE SOCKET FROM THE REMOTE CONTROL

Press the 'Learn' button (2 secs) on the plug-in remote socket and release. The LED light will begin to flash to indicate that the remote socket is in learn mode.

Press the 'Off' button on the remote control. The LED light will stop flashing on the remote control socket.

TROUBLE SHOOTING.

Transmitter: Check to make sure the battery is inserted correctly, replace with new if required. Make sure receiver is within range, plug-in transformers can effect the transmission range.
Plug-in Receiver: - Try reprogramming the transmitter to the plug-in receiver or reset the plug-in receiver
 - see **NOT WORKING...TRY A FACTORY RESET**

IMPORTANT:

There are no serviceable parts, do not repair. The appliance is not to be used by children or persons with reduced physical, sensory or mental capabilities, or lack of experience and knowledge, unless they have been given supervision or instruction. Children should be supervised to ensure that they do not play with the appliance.



SPECIFICATION:
 Remote Control: SH5-TDR-F
 Power: 1 x 23A Battery (Included)



Remote Socket: SHS-51000-UK
 SHS-51000-UK/S
 Power: 230-240V~50Hz
 Range: 30 Metres
 Max resistive load: 3000W Resistive
 Indoor Use Only



Warning:
 Never exceed the product specification

Smartwares declares that this appliance, complies with the main essential requirements of the R&TTE directive, 1999/5/CE. The complete declaration of conformity is available on request at:

smartwares® Europe Jules Verneweg 87 5015 BH Tilburg The Netherlands service.smartwares.eu	NL : 0900-2088888 Lokaal tarief BE : 070-233031 (NL) Lokaal tarief : 0800-97570 (FR) Gratuit	CUSTOMER SERVICE
	FR : 0825 560 650 15ct/min DE : +49 (0) 1805 010762 14Ct./Min. dt. Festnetz, Mobil max. 42Ct./Min	
	UK: +44 (0) 345 230 1231 ES : +34 938427589	
	433.92MHz	
	CE	

CE Conforms to all relevant European Directives.



This symbol is known as the 'Crossed-out Wheeled Bin Symbol'. When this symbol is marked on a product or battery, it means that it should not be disposed of with your general household waste. Some chemicals contained within electrical/electronic products or batteries can be harmful to health and the environment. Only dispose of electrical/electronic/battery items in separate collection schemes, which cater for the recovery and recycling of materials contained within. Your co-operation is vital to ensure the success of these schemes and for the protection of the environment