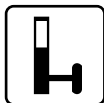
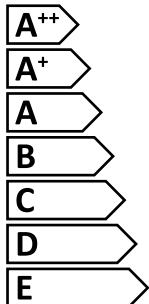


smartwares® ES162



This luminaire is compatible with bulbs of the energy classes:



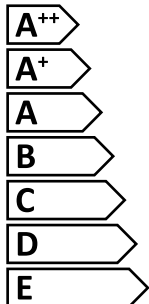
874/2012



smartwares® ES162



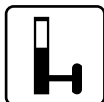
Diese leuchte ist für Leuchtmittel der Energieklassen geeignet:



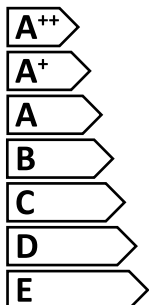
874/2012



smartwares® ES162



In deze armatuur passen lampen van energieklassen:



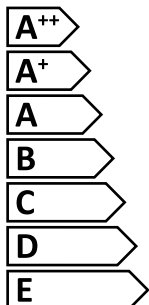
874/2012



smartwares® ES162



Ce luminaire est compatible avec les ampoules des classes énergétiques:



874/2012



IP44



www.smartwares.eu	Smartwares Safety & Lighting	Broekakkerweg 15 5126 BD Gilze The Netherlands	NL : 0900-2088888 BE : 070-233031 FR : 0825 560 650 DE : +49 (0) 1805 010762 14Ct/Min dt. festnetz, Mobil max. 42Ct/Min UK : +44 (0) 345 230 1231 ES : +34 938472589	10kval Tarif 10kval Tarif 10kval Tarif 10kval Tarif
CUSTOMER SERVICE				

10.020.95-20150122.GA.L4A



smartwares®



INDOOR AND  
OUTDOOR



MOTION  
DETECTION

60

WATT  
MAX.



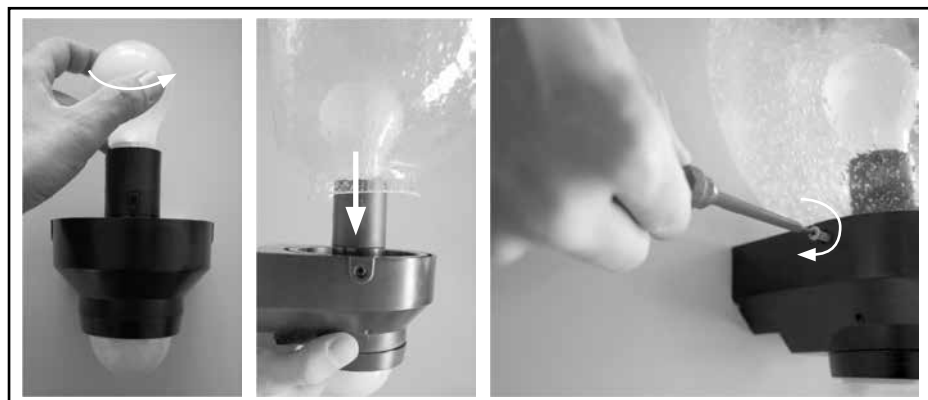
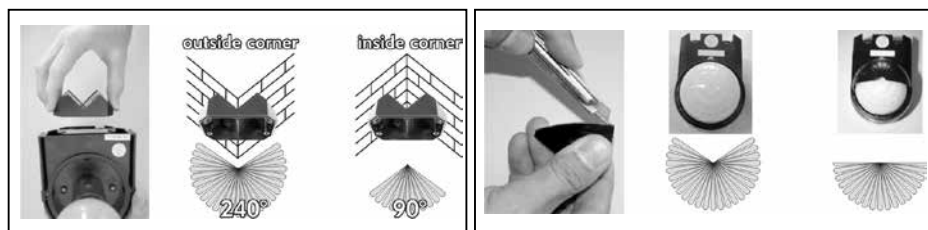
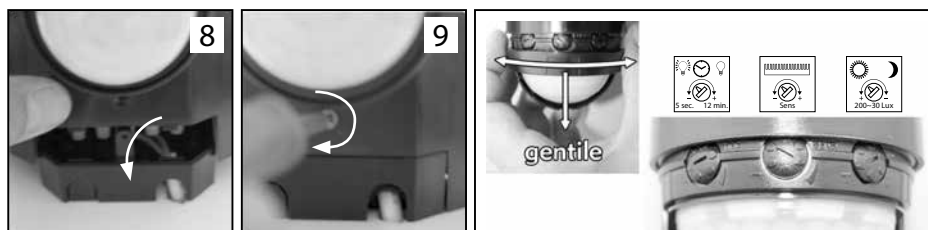
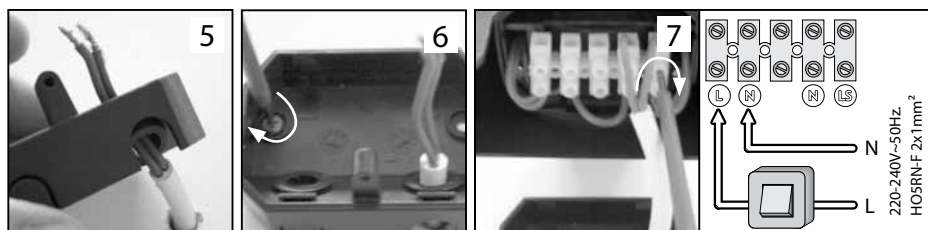
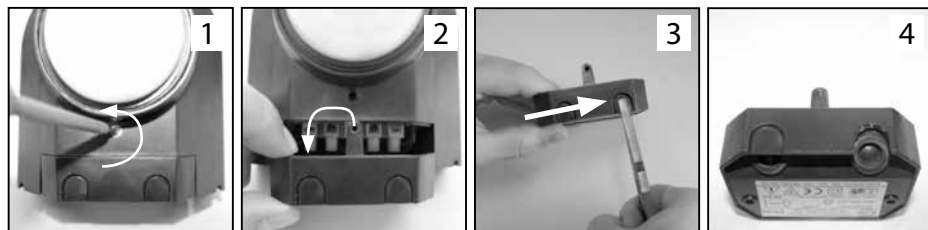
±240°  
MAX. 12M

## outdoor light with motion detector

- GB** Outdoor light with 240°  
passive infrared detector
- DE** Außenleuchte mit 240°  
P.I.R Bewegungsmelder
- PL** Oświetlenie zewnętrzne z pasywnym  
dedektorem podczerwieni o kącie 240°

- NL** Buitenverlichting met 240°  
P.I.R. bewegingsmelder
- FR** Applique murale extérieure avec  
decteur de mouvement angle 240°
- ES** Luz exterior con detector infrarrojo  
pasivo y ángulo de acción de 240°

ES162 / 10.020.95



# ES162 / 10.020.95

POWER	220-240V~ 50Hz
WATTAGE	13W CFL or 60W incandescent lamp
PROTECTION CLASS	IP44
DIMMABLE	NO