

INSTALLATION/OPERATING MANUAL

CAUTION:

This manual is written for multi DVR systems. The functions, specifications and connections can be different.

Do not place heavy objects on top of the product.

Do not drop any hard objects or allow liquid to penetrate into the unit.

Regularly brush off dust on the circuit board, connectors, fans and DVR case. Turn off the power and unplug the product before cleaning.

Do not attempt to disassemble or repair the unit or replace parts yourself.

Operating Environment:

Keep and use the product at temperatures between 0 °C ~40 °C. Keep it away from direct sunlight or heat sources.

Do not install the unit in a humid environment.

Do not expose the product to a smoky or dusty area.

Avoid serious collision. Do not drop the device.

Install the product on a stable and level surface to prevent the device from falling.

Ensure the location planned for DVR installation is well ventilated. Do not block any openings.

Use the product only within the range of rated input/output.

Table of Contents

Chapter 1 Introduction	4
1.1 Product Overview.....	4
1.2 Main Features	4
Chapter 2 Unpacking Inspection and Cable Connections.....	7
2.1 Unpacking	7
2.2 Rack mount	7
2.3 Front Panel.....	8
2.4 Connection Diagram	9
2.5 Audio/Video IO Connections.....	9
2.5.1 Connect Video Input	9
2.5.2 Selection and Connection of Video Output Devices.....	100
2.5.3 Audio Signal Input	10
2.5.4 Audio Output:	100
Chapter 3 Basic Operation	122
3.1 Turn Power On.....	122
3.2 Turn Power Off	122
3.3 Log in	133
3.4 Preview	133
3.5 Desktop Quick Launch.....	144
3.5.1 Main Menu	144
3.5.2 Video Playback	155
3.5.3 Recording Control.....	19
3.5.4 PTZ Control.....	19
3.5.5 Image Color	255
3.5.6 Output Adjustment	256
3.5.7 System Shutdown.....	266
3.5.8 Page Switch	277
Chapter 4 Main Menu	288
4.1 Main Menu Navigation	288
4.2 Video Recording Functions.....	29
4.2.1 Recording settings	29
4.2.2 Video Playback	311
4.2.3 Video Backup	311
4.3 Alarm	322
4.3.1 Motion Detection	322
4.3.2 Video Blind.....	344
4.3.3 Video Loss	355
4.3.4 Abnormality	355

4.4 System Settings	36
4.4.1 General Settings	36
4.4.2 Encoding Settings	37
4.4.3 Network Settings	39
4.4.4 Network Service	39
4.4.5 Output Mode	48
4.4.6 PTZ Settings	48
4.4.7 Serial Port Settings	49
4.4.8 Auto Sequence Settings	500
4.5 Management Tools	500
4.5.1 Channel Management	50
4.5.2 Hard Drive Management	51
4.5.3 User Management	52
4.5.4 Online User	54
4.5.5 Output Adjustment	55
4.5.6 Auto Maintenance	55
4.5.7 Restore Default	55
4.5.8 System Upgrade	56
4.5.9 Device Information	56
4.5.10 Import/Export	57
4.6 System Information	57
4.6.1 Hard Drive Information	57
4.6.2 BPS	58
4.6.3 Log	58
4.6.4 Version Information	59
4.7 System Shutdown	600
Chapter 5 Cloud Technology Basic Operation	661
5.1 Cloud technology monitor	661
Chapter 6 FAQ and Maintenance	666
6.1 FAQ	66
6.2 Maintenance	732
Appendix 1. Mouse Operations	73
Appendix 2. Hard Drive Capacity Calculation	74

Chapter 1 Introduction

1.1 Product Overview

This device is an excellent digital surveillance product specially designed for security monitoring. The system is more stable with embedded LINUX OS, using standard H.264MP video compression and unique spatial-temporal reasoning to achieve synchronized high definition and low bit rate audio/video monitoring. With TCP/IP network technologies, it has ideally suited to remote data transmission and operation control via web applications.

This product can operate not only as a stand alone local unit, through a professional network video surveillance platform, it can also be connected to other units to form a more powerful surveillance network system, making full use of its capacity in networking and remote monitoring.

It is a perfect choice for security applications in industries and sectors such as banking, telecommunication, electricity, law enforcement, transportation, intelligent community, manufacturing facilities, warehouses, natural resources and water conservation facilities.

1.2 Main Features

Real-time surveillance

- Analog output interface and VGA connector to connect monitoring device or screen display.
- 2 BNC outputs and 1 HD VGA for simultaneous real-time monitoring
- Real-time screen preview with zoom-in feature. You may select any area in the display to enlarge

Data storage

- Hibernate inactive hard drive in hard drive management, helping ventilation and reducing power consumption to extend the useful life of the hard drives
- Data storage using tamper-proof proprietary file format to ensure data security

Compression method

- Live data compression of A/V signals from each channel by independent hardware to maintain the stable synchronization of sound and image

Backup feature

- Backup through SATA interface and USB interface (to devices such as flash drive or removable hard disk)
- Live disk burning, backup burning
- Local archiving by downloading files on hard drives via network to client's PC

Video playback

- Each channel records all-live video independently while simultaneously providing retrieval, playback, network monitoring, recording search and downloading
- Various playback modes, simultaneous multi-channel playback, and combination of any desired channels.

- Select any area of the screen to zoom-in

Network operation

- Real-time remote monitoring through network connection (including mobile phone)
- Remote PTZ control
- Remote control video retrieval and live playback
- Configuration of device parameters through user port
- Live recording and playback on client's PC

Alarm coordination

- Alarm linkage to camera recording, auto sequence, screen display, buzzing, screenshot snapping, Email notification and FTP uploading
- Multi-channel relay on/off switch for alarm outputs, facilitating coordinated actions and on-site lighting control
- Protective circuit on both alarm input and output to prevent damage to main units

Communication interface

- RS485 serial port for alarm input, PTZ control and keyboard
- RS232 jack. Expandable keyboard connection can be used for master control, system maintenance and upgrading through connected PC serial port, as well as matrix control
- Standard Ethernet interface for remote network access

Smart operation

- Mouse operation

- Keyboard operation
- Quick copy-paste function to clone same settings in the menu

Other features

- 2 X 12V power outputs
- Timer

Chapter 2 Unpacking Inspection and Cable Connections

2.1 Unpacking

When you receive the product, first inspect the package for visible damage. The protective packing materials used for the product can handle most accidental shocks and impacts during transport.

Then, take out the device, remove protective film from the DVR, and inspect the product for any visible sign of damage.

Finally, open the case to check for loose connections to front panel data cables, power cord, power supply to fans and motherboard.

1. Front and Rear Panels

- ◆ Refer to the user manual for details on the functions of various front panel buttons and rear panel connectors.
- ◆ Please verify carefully the product model on the front panel plaque and make sure it is the model you ordered.

Do not tear off the label on the rear panel as it is extremely important to our post-sale service. When you contact our post-sale service, you will need to provide the model number and serial number printed on the label.

2. Items to be checked after opening the case

In addition to checking for visible damage, please inspect for any loose connections to the front panel cables, power cord and motherboard.

2.2 Rack mount

The product uses a standard 1U chassis and can be mounted to a standard rack.

Installation procedures and precautions:

- 1、 Make sure the room temperature is below 35° C (95°F);
- 2、 Allow 15cm (6") clearance around the product for proper ventilation;
- 3、 Always fill the rack from bottom up;
- 4、 Consideration should be given to protecting the rack from circuit overload when mounting multiple units to the rack.

2.3 Front Panel



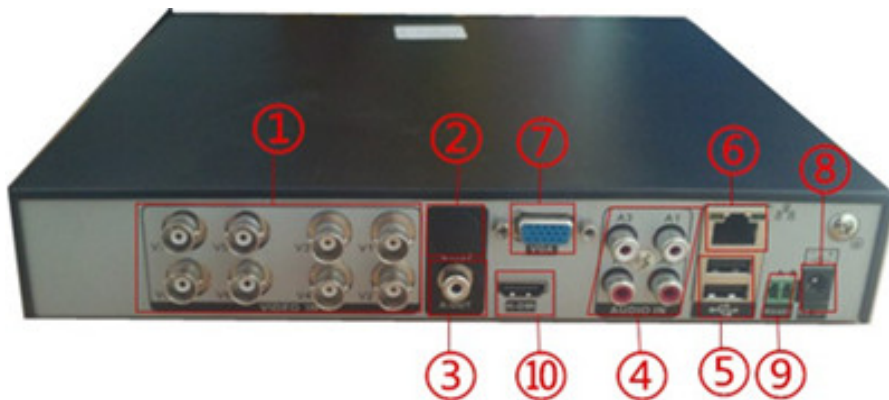
(1)Power (2)Rec (3)IR (4)ESC (5)Menu (6)Enter (7)Arrow

Functions of front panel buttons

No.	Name	Symbol	Function
1	Power	PWR	Boot up or shut down
2	Recording	REC	Manually begins recording
3	IR	IR	Remote controlling indicator light
4	ESC	ESC	Back to previous Menu or cancel operation in the function menu
			Back to preview status when in the playback status
5	Menu	MENU	Enter into Mainmenu
6	Enter	ENTER	Enter,
			Enter into Mainmenu
7	Arrow	∨ ∨	In the Menu,press up or down to move Cursor
			Change configuration in the Drop-down menu
			Press up or down to select record file in the playback status
			In the Preview screen,press up or down to go into 1/4/8/9/16 multiple channels screen

			In the Menu,press left or right to move Cursor
		< >	In the playback status,press left or right to move cursor of function button
			Back to preview status when in the playback status

2.4 Connection Diagram



- (1)Video input (2)Video output (3)Audio output (4)Audio input
(5)USB interface (6)Network interface (7) VGA interface
(8)Power input (9) RS485 PTZ output (10) HDMI output

2.5 Audio/Video IO Connections

2.5.1 Connect Video Input

The DVR has BNC video input connectors. Signal requirements: PAL/NTSC BNC (1.0V, 75Ω)。

Video signal should conform to the national standards with a higher signal-to-noise ratio, low distortion and low interference; requiring picture to be clear, with no image distortion, with natural color and appropriate brightness.

Ensure stable and reliable camera signal:

Install the camera in appropriate locations to avoid backlighting and surroundings with dim light or use low illumination camera and camera with effective backlight compensation.

Cameras should share reliable common ground with the DVR to ensure the normal operation of the camera.

Ensure stable and reliable line transmission of signal:

Use high-quality, shielded video coaxial cable. Select the right type depending on the transmitting distance. If the distance is extensive, you should consider the use of cable with twisted pairs, video signal enhancing devices and fiber-optic cables to maintain the signal quality.

Keep the video transmitting line away from other devices and circuits that generate strong electromagnetic interference. In particular, protect it against high voltage power surge.

Ensure secure wire connections:

Signal lines and shielded cables should have tight connections. Avoid false soldering and prevent oxidation of the solder connection surface.

2.5.2 Selection and Connection of Video Output Devices

PAL/NTSC BNC ($1.0V_{P-P}$, 75Ω) video output and VGA output exist (They can operate simultaneously)

When using a computer monitor as an alternative surveillance display, pay attention to the following:

1. In order to prolong the life of the equipment, do not leave the monitor power-on for an extended period of time;
2. Perform demagnetizing regularly to ensure proper working status of the monitor;
3. Keep it away from devices generating strong electromagnetic interference.

TV is not a reliable alternative as the video output device. It also requires minimizing the power-on time and tight control of interference from surrounding power source and devices. Possible electricity leakage from low quality TV could result in damage to other devices.

2.5.3 Audio Signal Input

AV interface for audio input.

With higher impedance, active pickup is required.

As with video input, the audio transmission line should minimize interference, prevent inadequate soldering and faulty connections. Pay special attention to protection against a high voltage power surge.

2.5.4 Audio Output:

The parameter of the DVR audio output signal is usually greater than 200mv $1\text{k}\Omega$ (AV). It can be

directly connected to low impedance headphones, powered speakers or drive other audio output devices through an amplifier. If spatial isolation cannot be established between external speakers and pickups, it could result in a whistling sound. In the event, you may:

- 1、 Use pickups with better directivity;
- 2、 Adjust speaker volume to the level below whistle threshold;
- 3、 Use sound-absorbing materials in the working environment to reduce sound reflection and improve room acoustics;
- 4、 Adjust the layouts of pickups and speakers to reduce the occurrence of whistling.

Connections to PTZ

- A. The PTZ decoder must share a common ground with the DVR or possible presence of common-mode voltage may cause you to lose control of the PTZ.

We recommend shielded twisted pair cable with its overall shield being used for common ground;

- B. Prevent against high-voltage power surge. Wire cables must be able to protect equipment from lightning
- C. Connect a 120 Ohm resistor in parallel at the far-end to reduce reflection and guarantee the signal quality;
- D. The AB-wire connections of the DVR's 485 cable cannot be combined with 485 cables from other output devices;
- E. AB line voltage of the decoder should be lower than 5V.

Ground Wires of front-end equipment

Incorrect grounding may result in chips being burned.

Chapter 3 Basic Operation

Note: Grayed out button means the function is not supported

3.1 Turn Power On

Connect the unit to a suitable power outlet before turning on the power switch on the rear panel. Power indicator light is on and DVR starts booting. When the booting is finished, a “beep” is heard. Multi-screen is the default video output mode. If the unit is turned on within the scheduled recording time period, the system will start scheduled recording automatically. Recording indicator on the corresponding channel turns on. The system works normally.

Note: 1. Before turning on the power, make sure the mains voltage matches sliding switch of the unit and the power cord is connected correctly.

2. External power supply requires 220V±10% /50Hz.

We recommend the use of power supply with stable voltage and less ripple interference. Whenever possible, consider the use of UPS for power backup.

3.2 Turn Power Off

The unit can be turned off using softswitch and “hardswitch”. Softswitch, Select **【Turn Off】** in **【Main Menu】** > **【Shutdown System】**; Hardswitch, Press the power switch on the rear panel to turn off the power.

Instructions:

1. Power failure recovery

If the DVR is shut down unexpectedly during recording, after the unit is rebooted it will automatically save the data before the shutdown and return to where it was.

2. Replacing hard drives

You must turn off the rear panel power switch before replacing the hard drive.

3. Replacing batteries

Save the configuration information and turn off the rear panel power switch before

replacing batteries. The DVR uses button batteries. You need to check the system time periodically. Batteries need be replaced when the time becomes inaccurate, we recommend replacing batteries of the same type once every year.

Note: Save the configuration before replacing batteries on the motherboard or the configuration information will be lost.

3.3 Log in

After normal start-up, the operator is asked to log in. The system will provide corresponding functions based on user permissions.

Factory default setting provides 3 user types with no password: admin, guest, and default. The factory setting of admin user has superuser permissions while the defaults for guest and default are limited to preview and playback. Admin and guest users may change their password but cannot change the permissions. Default user is a default login user. Default user may change permissions but not the password.



Figure 3.1 Log In

Password protection: If the password is entered incorrectly on 3 consecutive occasions, the system will display a warning alarm; After 5 consecutive attempts, the account will be locked (The account will be unlocked automatically upon system reboot or after 30 minutes).

For security reasons, please change your User ID and Password under “User Management” (refer to Chapter 4.5.2 User Management) after initial login.

3.4 Preview

After normal login, the unit shows the preview screen. Right click the mouse to switch displays.

Each preview screen can show date, time, channel name, monitoring channel playback and alarm status.





1		Recording	3		Video loss
2		Motion detected	4		Camera lock

Table 3.1 Preview Symbols

3.5 Desktop Quick Launch

In Preview mode, right click the mouse to pop-up Quick Launch menu as shown in Figure 3.2. Quick Launch menu includes: **Main Menu, Guide, Record Mode, PlayBack, PTZ Control, Highspeed PTZ, Color Setting, Output adjust, and Log out.**

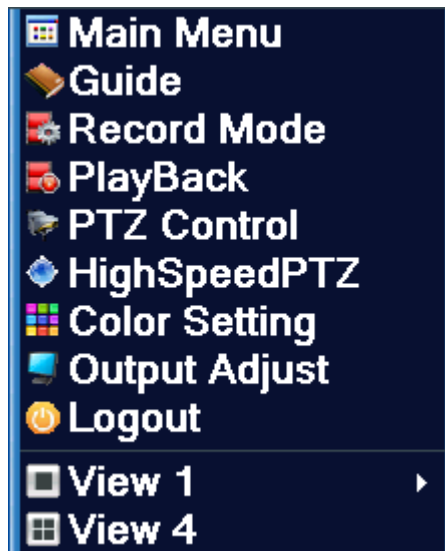


Figure 3.2 Quick Launch Menu

3.5.1 Main Menu

The main menu includes operating functions of the device.



Figure 3.3 Main Menu

3.5.2 Video Playback

Playback video files on the hard drives. Playback page is accessible by either using desktop quick launch or entering **【Main Menu】 > 【Recording Functions】 > 【Video Playback】** .

Note: For normal playback, the hard drive containing the file must be set up as read/write or read-only (refer to 4.5.1 Hard Drive Management).





Figure 3.4 Video Playback

1	Playback Control	2	Operating Prompt	3	Recording Type	4	Progress Bar Option
5	Toggle between time and file mode	6	File Search	7	Channel Selection	8	Date Selection
9	Storage Device Selection	10	File Information	11	File List	12	Time Inquiry

Descriptions of Table 【Playback Control】 please see below:

【File List】 displays all files match the search criteria;

【File Information】 Show details of selected files;

【File Backup】 Backup files ticked. Click the button to show the screen as Figure 3.5 and follow the instructions.

Note: Install a storage device large enough for the backup files before the operation;

If the backup is terminated, files already copied to the storage device can be played back independently.

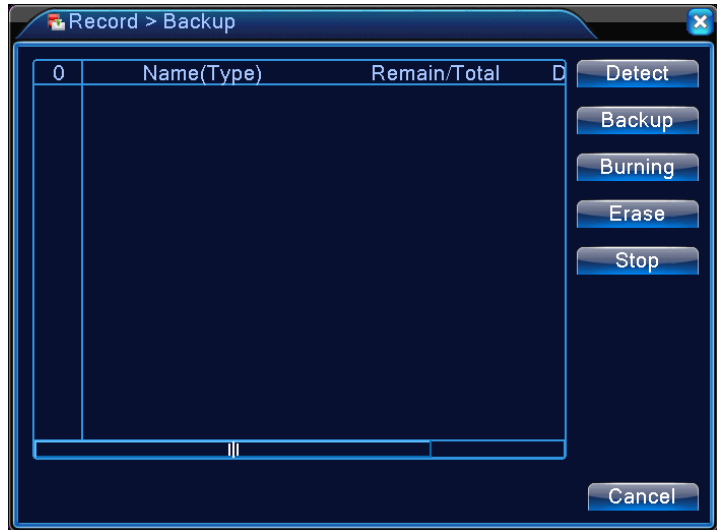


Figure 3.5 Storage Device Check

Detect: Detect storage devices connected to the unit. It could be USB flash drives or hard drives.

Erase: Select the devices you wish to clean up. Click **Erase** to delete files on the devices.

Stop: Stop the backup;

Backup: Click **Backup** to show the dialog as Figure 3.6. Backup can be setup based on file type, channel, or time.

Burning: *****



Figure 3.6 Record Backup

Empty: Empty file information shown;

Add: Show all information matching the specified file properties;

Start/Stop: After selecting the files, click **Start** to backup and **Stop** to terminate the backup.

Note: During backup, you may exit the page to execute other functions.

【File Search】 Search for records based on the specified search criteria;

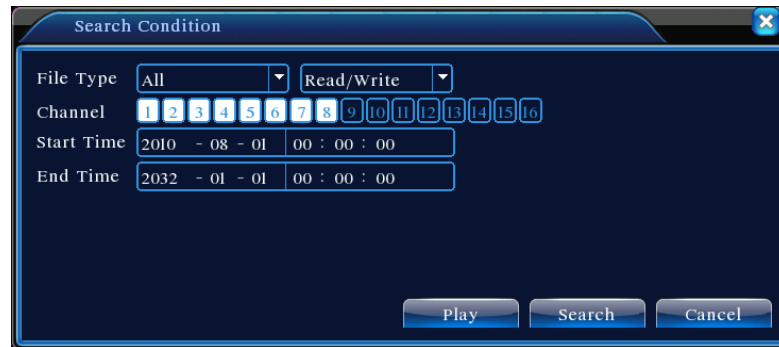


Figure 3.7 File Search

File Type: Select the type of files to be played back;

Hard Drive Selection: Select the type of storage device;

Channel: Choose the channel number for playback. “All” means all channels;

Start time: Specify the start time of the record being searched.

End time: Specify the end time of the record being searched.

Descriptions of Table **【Playback Control】** please see below:

Keys	Functions	Keys	Functions
	Play/Pause		Play reverse
	Stop		Step forward
	Fast forward		Play last frame
	Play next frame		Play last file
	Play next file		Loop
	Full Screen		


Table 3.2 Playback Control Keys

Note: Frame playback can only be used in Pause mode.

【Operation tips】 Show the function of the button indicated by the cursor.

Special Features:

Accurate Playback: In **【Search Criteria】** window, enter the time (hour, minute, second)

of the record being searched. Click **Enter** to access playback screen. Click  **Playback** button directly to perform Accurate Playback of the record searched;

Zoom In: When performing single-screen full screen playback, left click the mouse to select any area on the screen. Left click the mouse again within the selected area to playback in zoom-in mode. Right click the mouse to exit zoom-in.

3.5.3 Recording Control

Control recording on each channel. Highlighted “●” indicates the current recording status of the channel. Playback page is accessible by either using desktop quick launch or entering **【Right Click】 > 【Recor mode】** .



Figure 3.8 Recording Control

【Schedule】 Record in accordance with the configuration parameters;

【Manual】 Regardless of the current status of the channel, selecting “Manual” will start the recording on the corresponding channel;

【STOP】 Regardless of the current status of the channel, selecting “STOP” will stop the recording on the corresponding channel;

3.5.4 PTZ Control

Control Pan/Tilt/Zoom connected to the device. Use desktop quick launch to enter the menu.

Control interface is shown as in Figure 3.10. Functions supported: Control PTZ directions, step length, zoom, focus, aperture, operating preset, point-to-point patrol, trace, boundary line scanning, auxiliary switch, light switch, and horizontal rotation.

Note 1. Before operating, make sure the A/B cables of the dome are properly connected to the DVR

A/B jacks;

2. Setup PTZ parameters in **【Right Click】 > 【PTZ Setup】**;

3. Functions supported by PTZ depend on the features supported by PTZ protocol.



Figure 3.9 PTZ Control

【Step length】 Determine the rotating range of the PTZ. The larger the setting, the longer the step length. Setting range: 1 ~ 8 ;

【Zoom】 Use **[-]** / **[+]** keys to adjust camera magnification;

【Direction Control】 Control the rotation of the PTZ. Support controls in 8 directions (front panel supports only 4 directions);

【High Speed PTZ】 After selection, the selected channel displays full-screen. Hold down the left button of the mouse to quickly rotate and position the PTZ. Turning the mouse wheel while holding down the left button can adjust the camera zoom;

【Set】 Access function setting menu;

【Page Switch】 Enter function control menu.

Special Features:

1. Preset

Select certain direction as preset. PTZ automatically rotates in the direction based on the preset value.

1) Preset setup

To setup a direction as preset, follow these steps:

Step 1: In Figure 3.10, use arrow keys to rotate the PTZ to the desired preset position. Click

Setting key to enter Figure 3.11;

Step 2: Click **Preset** button and input preset value in Preset Position box;

Step 3: Click **Set** to return to Figure 3.10. When complete, each preset value has a corresponding preset position.

Del Preset: Enter the preset value, click **Del Preset** button to clear the preset setting.



Figure 3.10 Preset position setup

2) Preset position call-up

In Figure 3.10, click **Page Switch** button to enter PTZ control interface as shown in Figure 3.12. Enter the number of the preset in **Value Input Box**. Click **Preset Position** to rotate the PTZ to the corresponding preset position.



Figure 3.11 PTZ Control

2. Point-to-Point Patrol

Connect multiple preset positions to construct a patrol route. PTZ will sweep the patrol route repeatedly following the Point-to-Point patrol setup.

1) Point-to-Point Patrol Setup

Patrol route is the trace line consisted of multiple preset positions. To set up:

Step 1: In Figure 3.10, use arrow keys to rotate the PTZ to the desired preset direction. Click **Set** key to enter Figure 3.13;

Step 2: Click the **Point-to-Point Patrol** key and enter a route number in Patrol Route box. Click **Add Preset Position** key to input preset number in the dialog box. That will be one of the preset points selected for patrol;

(You may add or delete preset points after finishing the patrol route setup)

Step 3: Repeat Steps 1 and 2 until the desired patrol route includes all preset points.

Del Preset: Enter the preset value, click **Del Preset** button to clear the setting for preset points.

Clear Patrol Route: Enter the patrol route number, click **Clear Patrol Route** button to clear all point settings along the patrol route.

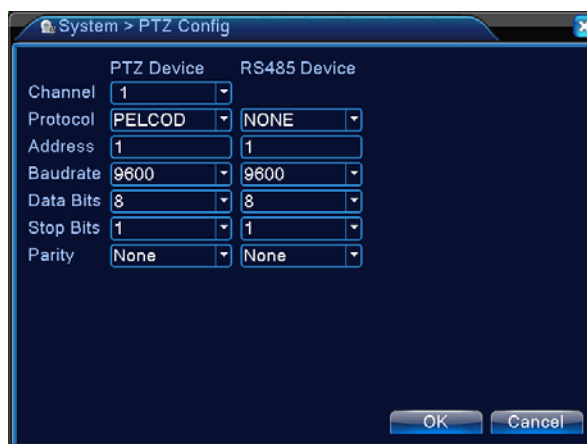


Figure 3.12 Point-to-Point Patrol Setup

2) Point-to-Point Patrol Call-up

In Figure 3.10, click **Page Switch** button to enter PTZ control interface as shown in Figure 3.12. Enter Point-to-Point Patrol number in **Value Input** box. Click **Point-to-Point Patrol** key to start PTZ patrol repeatedly. Click **Stop** key to terminate the patrol.

3. Trace

Using PTZ control to setup a patrol trace. Call it up to have PTZ patrolling along the trace repeatedly.

1) Setup Trace

To set up the trace, follow the steps below:

Step 1: In Figure 3.10, click **Set** key to open Figure 3.14;

Step 2: Click **Trace** key to enter trace number in the value input box;

Step 3: Click **Start** button to enter the page shown in Figure 3.10 and adjust **Zoom, Focus, Aperture,** and **Direction,** etc. Click **Set** and return to Figure 3.14;

Step 4: Click **End** to complete the setup. Trace number now has its corresponding route. Right click to exit Setting page.



Figure 3.13 Trace Setup

2) Trace call-up

In Figure 3.10, click **Page Switch** button to enter PTZ control interface as shown in Figure 3.12. Click **Trace** button and enter trace number in **Value Input box**. PTZ will operate following the route setup. Click arrow keys to stop.

4. Boundary Line Scanning

Set up a horizontal route and call up line scan to have PTZ run repeatedly on given route.

1) Line Scan Setup

Follow below steps to set up a section of horizontal curve as the trace for PTZ search:

Step 1: In Figure 3.10, use arrow keys to rotate the PTZ to the desired preset direction. Click **Set** key to enter Figure 3.15. Select the left boundary and return to Figure 3.10;

Step 2: Use arrow keys to select the desired position. Click **Set** to enter Figure 3.15 and select the right boundary. Then return to Figure 3.10;

Step 3: Complete the setting for left and right boundaries of the position.

Note: When left and right boundaries are on the same horizontal level, PTZ will rotate counter clockwise from left boundary to the right;

If they are not on the same level, PTZ uses the end of the horizontal trace connecting to the left boundary as the right boundary point and rotate anticlockwise from the left to the right.



Figure 3.14 Set up line scan boundary

2) Line Scan Call Up

In Figure 3.10, click **Page Switch** button to open the PTZ control interface as shown in Figure 3.12. Click **Line Scan** button. PTZ will rotate repeatedly following the route set up. Click **Stop** key to terminate the line scan.

5. Horizontal Rotation

Click Horizontal Rotation button to horizontally rotate the PTZ (relative to the camera's original position). Click **Stop** key to terminate the rotation.

6. Reverse Rotation

Click Horizontal Rotation button to reverse the rotation of the PTZ.

7. Reset

PTZ restarts. Values of all settings return to zero.

8. Page Switch

In Figure 3.12, click **Page Switch** to enter Figure 3.16 for auxiliary feature setup. Each auxiliary number corresponds to an AUX switch on the decoder.

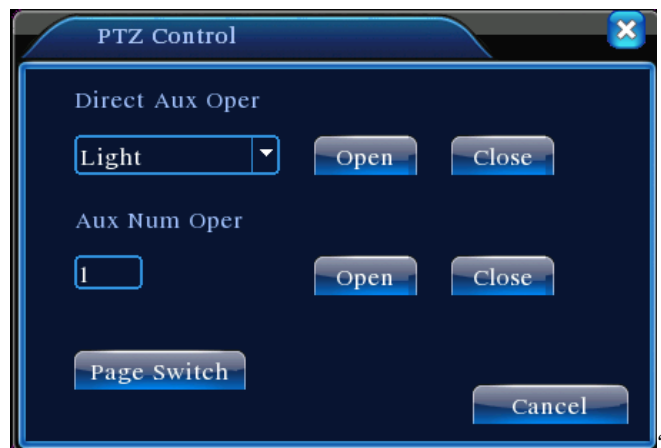


Figure 3.15 Auxiliary Feature Control

【Direct-View Auxiliary Operation】 Select the auxiliary device and **On/Off** switch to operate;

【Auxiliary Number Operation】 Operate the corresponding On/Off switch in accordance with PTZ protocols;

【Page Switch】 In Figure 3.16, click **Page Switch** to enter Figure 3.10. Access the PTZ menu to make changes using the available control keys.

3.5.5 Image Color

Access the interface through the desktop quick launch menu. Set up image parameters of the selected channel (current channel in single-screen preview, or the channel where the cursor lies in multi-screen preview). Image parameters include: Hue, Brightness, Contrast, and Saturation. It is also possible to set up different image parameters in two different time periods if needed.

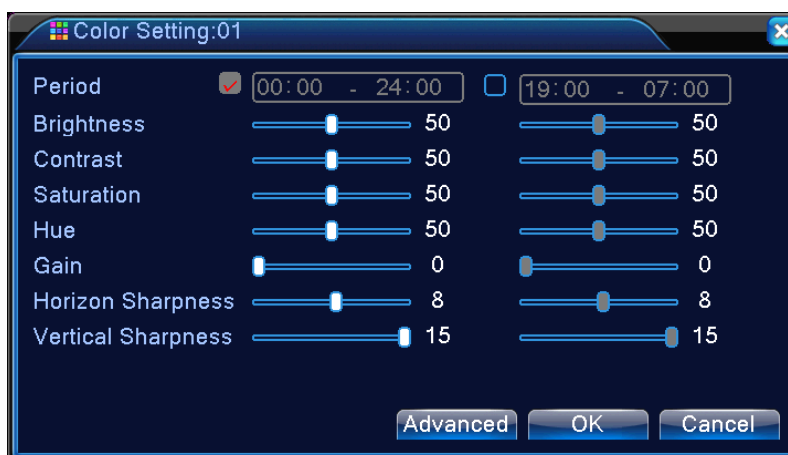


Figure 3.16 Image Color

3.5.6 Output Adjustment

To adjust the parameters of the area for TV output, enter Output Adjustment interface through the desktop quick launch menu or by clicking **【Right Click】 > 【Output Adjustment】** .

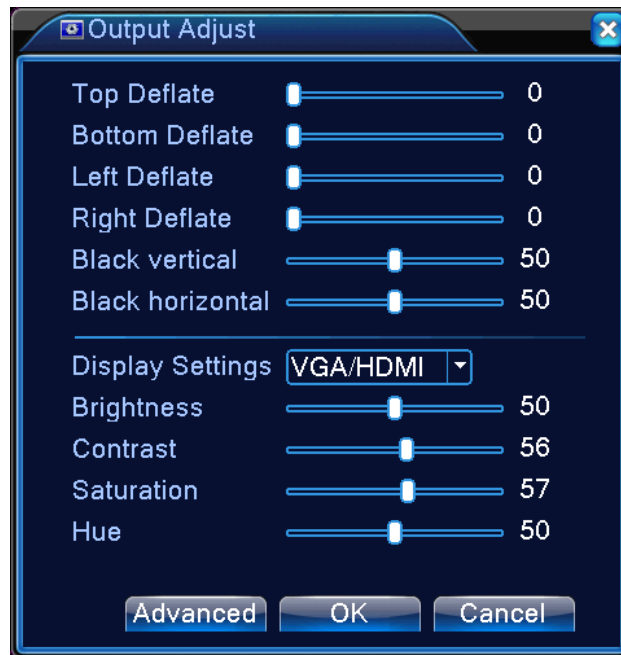


Figure 3.17 TV Tuning

3.5.7 System Shutdown

To Log off, shutdown, or restart the system, open the System Shutdown interface through the desktop quick launch menu or selecting in **【Main Menu】**.

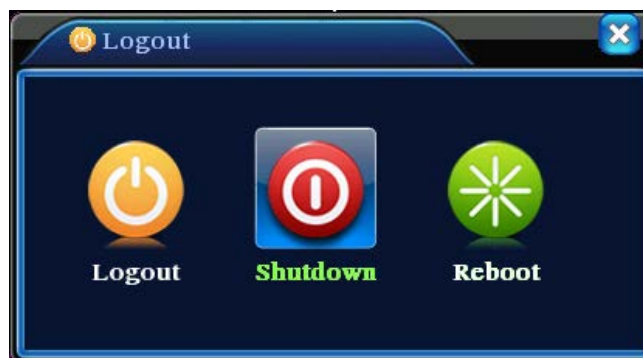


Figure 3.18 Shut down the system

【Log Out】 Exit the menu. Need to re-enter the password on the next visit;

【Shut Down】 Exit the system and turn off the power;

After press the Shut Down key, a progress bar pops up for shutdown confirmation.

Shutdown will be executed in 3 seconds unless it's cancelled.

【Reboot】 Exit, then restart the system.

3.5.8 Page Switch

Based on your selection, preview single-screen, 4-screen, 8-screen, 9-screen, and 16-screen.

Chapter 4 Main Menu

4.1 Main Menu Navigation

Main Menu	Submenu	Feature Overview
Record	Recording settings	Set up configuration, type, and time periods for recording on each channel
	Playback	Video search, playback, and save
	Backup	Check and format backup devices. Backup selected files
Alarm	Motion Detection	Set up motion detection alarm channel, sensitivity, range and parameters for coordinated actions: arm schedule, alarm output, screen prompts, recording, PTZ, and auto sequence
	Video Masking	Set up video masking alarm channel, sensitivity, and parameters for coordinated actions: arm schedule, alarm output, screen prompts, recording, PTZ, and auto sequence
	Video Loss	Set up video loss alarm channel and parameters for coordinated actions: arm schedule, alarm output, screen prompts, recording, PTZ, and auto sequence
	Abnormality	No HDD, HDD error, HDD capacity not enough, network cut, IP Conflict, linkage parameters, screen hint or buzz.
System Settings	General Settings	Set system time, format of date and time, language, device response when disk is full, local device serial number, video format, output mode, standby time, and daylight savings time
	Encoding Settings	Set parameters of main code and sub-code streaming for each channel: Encoding mode, Resolution, FPS, Stream control, Image definition type, Stream value, I-frame interval, and Video/Audio enabling
	Network Settings	Set basic network parameters, parameters of DHCP and DNS, High-speed network download
	Network Service	PPPOE, NTP, Email, IP access rights, DDNS, mobile phone monitoring, FTP, wireless call in, UPNP, simple DDNS
	Output Mode	Name channels, set up preview prompt status, transparency, area coverage, time and channel titles overlay
	PTZ Settings	Set up channels, PTZ protocol, address, baud rate, data bits, stop bits, parity
	RS323 Device	Set serial port function, baud rate, data bit, stop bit, check.

	Auto Sequence Settings	Set auto sequence mode and intervals
	Digital	Set channel mode, check channel status and configure the digital channel, ect.
Management Tools	Hard Drive Management	Set specified hard drive as read/write disk, read-only disk, redundant drive, data deletion, data recovery.
	User Management	Change user and user group. Change password. Add user and user group. Delete user and user group
	Online User	Force disconnection of a user logged into the network. Disconnect and freeze the account until next reboot.
	TV Tuning	Adjust upper/lower and left/right side margins of the TV
	Auto Maintenance	Set up system auto reboot, auto file deletion
	Device Info	device hardware configuration and message
	Import/Export	Export the device's log or configuration to external device(like USB flash disk);Input the configuration with external device(like USB flash disk).
	Restore Default	Reset setting status: General settings, encodings, recording, alarm, network, network services, preview playback, serial port, and user account management
	System Upgrade	Upgrade through external device (eg. USB)
Info	HDD	SATA connection state, information for all install Storage
	BPS	Bitrate Info
	LOG	Information of System Log
	Version	Display software version and build date
Logout	Logout	Logout the OSD menu or reset/restart the system

4.2 Video Recording Functions

The DVR can perform functions related to video recording: **recording settings** , **video playback**, **video backup**.

4.2.1 Recording settings

Set recording parameters on monitoring channels. At initial startup, the system defaults to 24 hours

continuous recording. Corresponding settings can be defined by entering **【Main Menu】>【Video Recording Functions】>【Recording Conf.】**

Note: For normal recording, at least one of the hard drives should be set up as read/write disk (refer to Chapter 4.5.1 Hard Drive Management for more details).



Figure 4.1 Recording Settings

【Channel】 Select proper channel for Channel Setup. Choose **ALL** if applying the settings to all channels;

【Redundancy】 Select redundancy function to have dual backups of the video files, i.e. record the video to both hard drives simultaneously. The DVR needs have two hard drives installed with one set as the read/write disk and the other as redundant disk (refer to Chapter 4.5.1 Hard Drive Management for more details);

【Length】 Set the time duration of each video file. Default is 60 minutes;

【Pre-Record】 Capture the moments 1-30 seconds before an event (actual time could be different depending on the bit stream);

【Record Mode】 Set recording status. There are three statuses: Configured, manual, and off;

Schedule: Record in accordance to the recording types (general, test and alarm) and time period defined;

Manual: Regardless the current status of the channel, select “Manual” will start general recording on all channels;

Stop: Regardless the current status of the channel, select “Stop” will stop the recording on the corresponding channel;

【Time Period】 Set time period for general recording. Recording will only start in the time range defined;

【Recording Type】 Set recording types. There are three types: general, test, and alarm.

Regular: Conduct general recording in the defined time period. The type of video file is marked "R";

Detect: During specified time range, trigger “motion detection”, “video masking”, and “video

loss” alarm signals. The corresponding alarm settings will turn on the recording function and start test recording. The type of video file is marked “M”;

Note: For “Alarm Function” settings, refer to Alarm Function section in Chapter 4.3.

4.2.2 Video Playback

See Chapter 3.5.2 Video Playback.

4.2.3 Video Backup

Backup DVR video files to an external storage device through this setting.

Note: Install a storage device for file backup before the operation; if the backup is terminated, files already copied to the storage device can be played back independently.

If the backup is terminated, files already copied to the storage device can be played back independently.



Figure 4.2 Storage Device Check

Detect: Detect storage devices connected to the unit. It could be USB flash drives or hard drives.

Erase: Select the devices you wish to clean up. Click **Erase** to delete files on the devices.

Stop: Stop the backup;

Backup: Click **Backup** to show the dialog as Figure 4.3. Backup can be setup based on file type, channel, or time.

Burning: *****



Figure 4.3 Record Backup



Backup format: Configuration the backup file format according to require can choose

Empty: Empty displayed file information;

Add: Show all information matching the specified file properties;

Start/Stop: After selecting the files, click **Start** to backup and **Stop** to terminate the backup.

Note: During backup, you may exit the page to execute other functions.

4.3 Alarm

Functions of DVR in alarm operation include: **motion detection, video masking, video loss, Abnormality.**

4.3.1 Motion Detection

Through video image analysis, when the system detects motion signals with the preset sensitivity, the motion detection alarm will be triggered and activate corresponding functions.

Note: **Advanced** key is the same as the right mouse button.

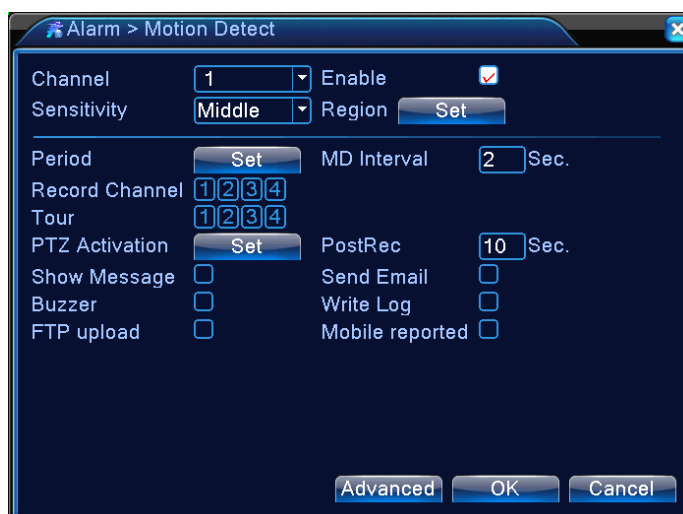


Figure 4.4 Motion Detection

【Channel】 Select the channel to set up motion detection area;

【Enable】 Highlight to enable the Motion Detection function. Corresponding settings can only be defined after Enable is ticked;

【Sensitivity】 Six settings based on sensitivity level;

【Region】 Click **Setting** to enter the area which is divided into PAL22X18. Colored areas are the areas covered by motion detection while dark areas are not covered. Set areas as Figure 4.5. Hold down the left mouse button to toggle the grid blocks. (All areas default to covered)

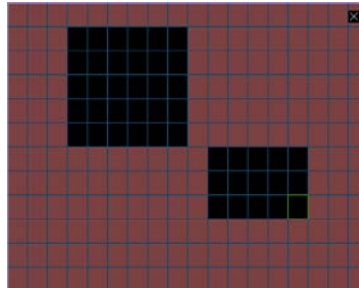


Figure 4.5 Set Area

【Arm/Disarm Schedule】 DVR triggers motion detection alarm signal only during the time periods set up as in Figure 4.6. Recording can be scheduled weekly or in a general calendar. Each day is divided into four time sections. The time range will take effect only if the checkbox before the time range is ticked.

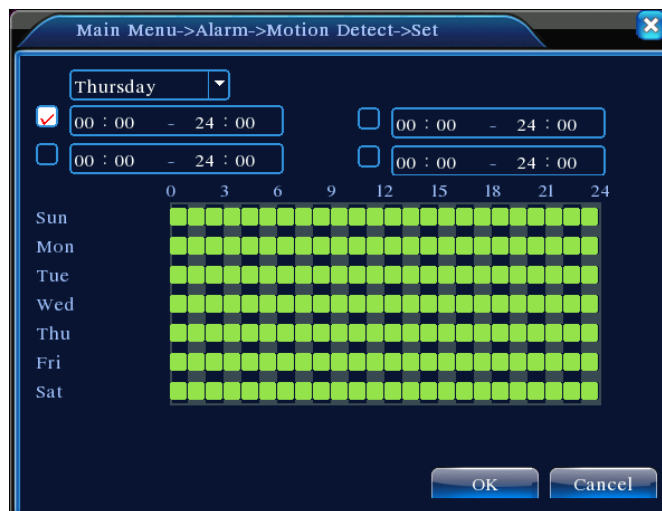


Figure 4.6 Time Range Setup

【Time Interval】 Within the scheduled time interval, if there are several occurrences, the detection only triggers alarm in sequence;

【Alarm Output】 When motion occurs, the setting will activate corresponding external devices connected to the alarm output port;

【Delay】 Indicate the extended time for which the alarm will continue after the alarm ends, ranging from 10~300 seconds;

【Recording Channel】 Select the desired recording channel (Can be ticked). When alarm is triggered, the system will activate the recording signal on that channel;

Note: To perform corresponding video recording, it requires the settings in 【Record Settings】 to activate test recording in the defined time periods

【Auto Sequence】 Highlighted ■ indicates it is selected. When alarm signal is present, the selected channel will start single-screen auto sequence preview. The interval for auto sequence is defined in 【System Settings】 > 【Auto Sequence Settings】;

【Snapshot】 Select the desired recording channel (Can be ticked). When alarm is triggered, the system will activate a snapshot signal on that channel;

Note: To perform the corresponding snapshotting, it requires the settings in 【Record Settings】 to activate test recording in the defined time periods

【PTZ Linkage】When alarm occurs, the PTZ on the defined channel will coordinate the action. Set it as shown in Figure 4.7;

Note: To coordinate PTZ, you need to set parameters for preset points, point-to-point patrol, and auto sequence in 【Quick Launch】 > 【PTZ Control】



Figure 4.7 PTZ Linkage

【Video Delay】 After the alarm status ends, the alarm recording will continue for an extended time, ranging from 10~300 seconds;

【Screen Prompt】 The on-screen alarm information prompt pops up on local display;

【EMAIL Notification】 Highlight ■ indicates that email notification will be sent to the user when alarm occurs.

Note: EMAIL Notification requires appropriate settings in 【Network Service】 .

【Beep】 The device generates two long buzzer beeps when alarm occurs.

4.3.2 Video Blind

When the video image is affected by external conditions such as dim light and reaches the sensitivity setting, it will trigger the video blind alarm and activate coordinating functions.

Note: **Advanced** key is the same as the right mouse button.



Figure 4.8 Video Blind

To set: refer to Chapter 4.3.1 Motion Detection.

4.3.3 Video Loss

When DVR is unable to receive a channel video signal, it will activate the video loss alarm and coordinate functions.

Note: **Advanced** key is the same as the right mouse button.



Figure 4.9 Video Loss

To set: refer to Chapter 4.3.1 Motion Detection.

4.3.4 Abnormality

Analyze and test certain hardware and software in current system. When detecting exceptional events, the unit makes corresponding responses such as screen prompt, buzzer beep, etc.

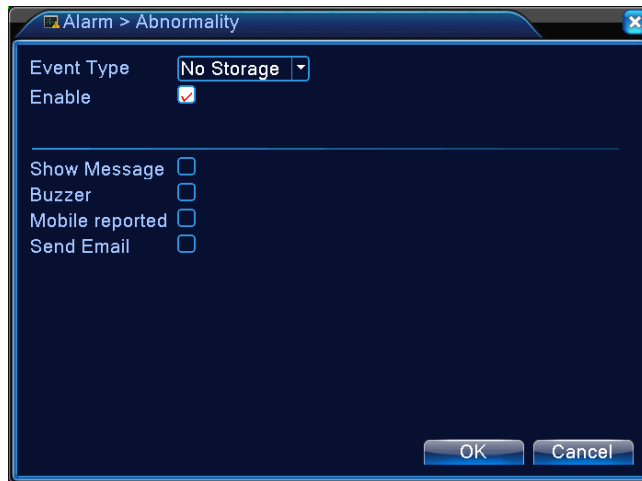


Figure 4.10 **Abnormality**

【Event Type】 Select the exceptional event in the drop-down list for testing

【Enable】 Highlight to enable Exception Handling function. Settings can only be activated after Enable is ticked;

【Screen Prompt】 The on-screen alarm information prompt pops up on local display;

【Buzzer】 The device generates two long buzzer beeps when the alarm sounds.

4.4 System Settings

To set various function parameters in DVR: **general settings, encoding settings, network settings, network service, output modes, PTZ settings, serial port settings, and auto sequence settings.**

4.4.1 General Settings

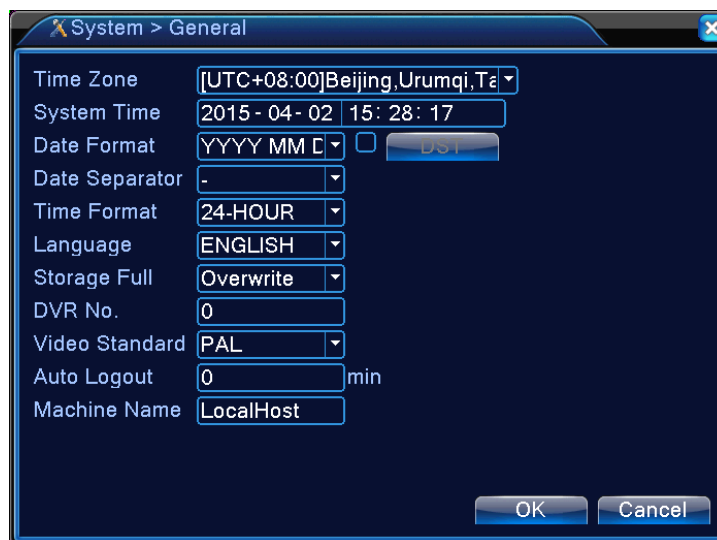


Figure 4.11 General Settings

【System Time】 Set DVR's current system date and time;

【Date Format】 Select the date display format: Y/M/D, M/D/Y, or D/M/Y;

【Date Separator】 Select the separators in the date format;

【Time Format】 Select 24 hour or 12 hour time format;

【Language】 Currently support 14 languages: English, Finnish, French, German, Greek, Italian,

Japanese, Polish, Portuguese, Russian, Spanish, Thai, Chinese, and traditional Chinese
【HDD Full】 Select **Stop**: When the installed storage disk is full, it will stop recording;

Select **Overwrite**: When the installed storage disk is full, it will continue recording and overwrite the oldest video files;

【DVR No.】 To be used when multiply DVRs are controlled by one remote control, press the address key on the remote control and input control address that matches the local device serial number of corresponding DVR to enable remote operation;

【Video Standard】 Support PAL and NTSC formats;

【Standby Time】 To set in menu the standby time from 0-60. 0 indicates no setting for standby;

【Daylight Savings Time】 Check off the Daylight Savings Time, then click Settings button to show Figures 4.13 and 4.14. Set the start and end time of Daylight Saving Time by Week or Date.

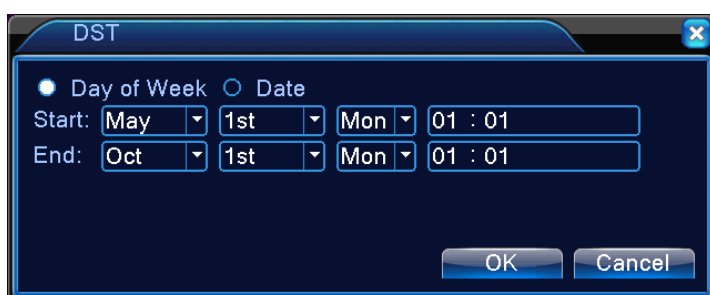


Figure 4.12 Daylight Saving Time Settings (by Week)

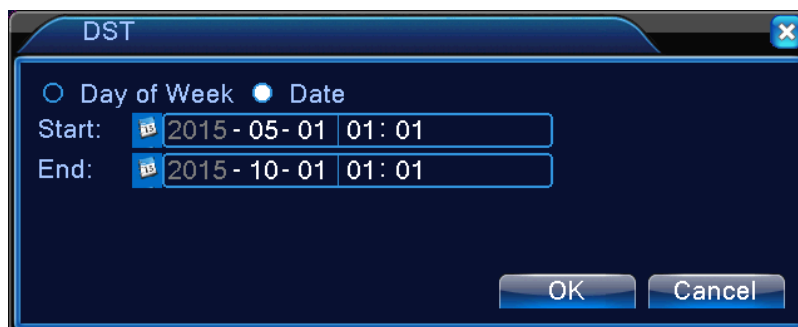


Figure 4.13 Daylight Saving Time Settings (by Date)

4.4.2 Encoding Settings

Set video/audio encoding parameters, including image parameters for video files and remote monitoring. Set encoding settings of each independent channel in the left section and parameters for sub-coding stream in the right side section. Dual stream uses one high bit-rate stream for local HD storage to support D1/HD1/CIF/QCIF codes and another low bit-rate stream (QCIF code) for network transmission, while taking care of local storage and remote network transmission in the meantime. While the network bandwidth is limited, dual stream covers both image quality and transmission quality, practically breaking through the network bottleneck. It flexibly picks stream format in accordance with the available network bandwidth to achieve high definition storage and transmits back-end low stream through network.

Note: Main applications of substream: to perform multi-channel live monitoring and mobile phone monitoring when the network connection is limited.



Figure 4.14 Encoding Settings

Independent Channel Encoding Settings

【Channel】 Select Channel No.;

【Compression】 Standard H.264MP;

【Resolution】 Show resolution types in D1/HD1/CIF/QCIF;

【Frame Rate】 Adjustable. Real-time video standards: PAL – 25FTP, NTSC – 30FTP;

【Frame Rate (FPS)】 May limit code stream. Variable stream. Under variable stream, 6 levels of image quality are available for selection;

【Bit Rate type】 Set Bit Rate to change picture quality. While the capacity of related devices allows, the bigger the bit rate, the better the picture quality;

Bit rate reference span: D1(512~2560kbps), HD1(384~2048kbps), CIF(64~1024kbps), QCIF(64~512kbps)

【Audio/Video】 When all checkboxes are ticked, the video file has multiplexed A/V stream;

Sub-stream Settings

Sub-stream is mainly used on the client-side monitoring or mobile applications.

【Channel No.】 Select Channel No. first, then tick the audio and video below to enable.

The procedures to set parameters for resolution, frame rate, stream control and bit rate are the same as setting in an individual channel.

4.4.3 Network Settings

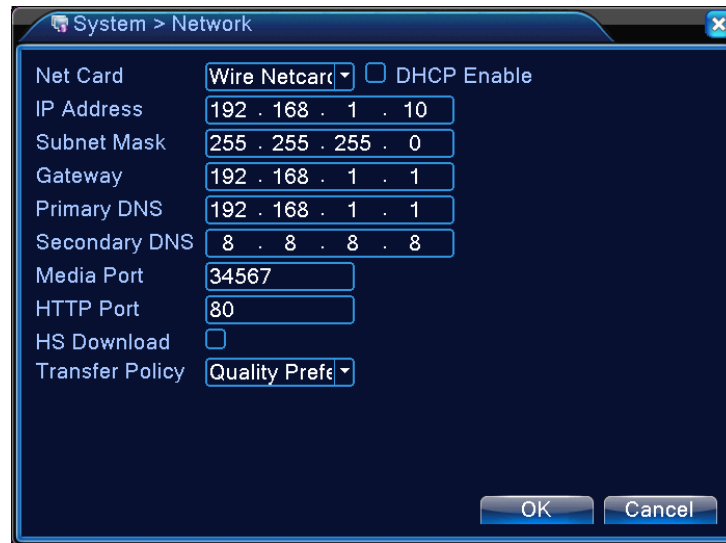


Figure 4.15 Network Settings

【Net Card】 May choose from wired or wireless network cards;

【Obtain IP Address Automatically】 Obtain IP address automatically (not recommended);

Note: Installation of DHCP server is required in advance

【IP Address】 Set DVR's IP address. Default IP address: 192.168.1.10;

【Subnet Mask】 Set subnet mask. Default subnet mask settings: 255.255.255.0;

【 Gateway】 Set Default Gateway for the device. Default setting: 192.168.1.1;

【DNS Settings】 DNS server, analyzes and identifies the IP address provided by your local network provider. Restart the system after set the address;

【Media Port】 Default is 34567;

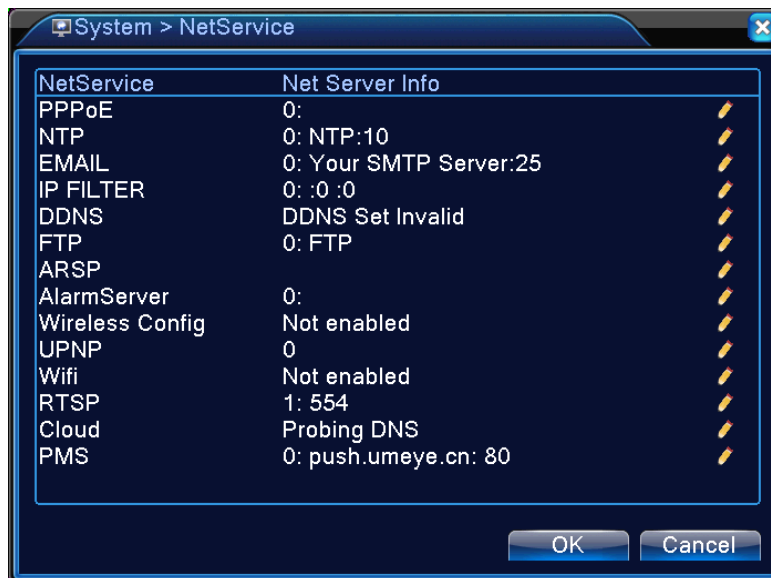
【HTTP Port】 Default is 80;

【Network High Speed Download】 Network high speed download;

【Network Transmission Strategies】 Three strategies: Self-adaptive, Picture Quality Preferred, Fluency Preferred. Depending on the settings, network transmission will automatically adjust the bit rate. Self-adaptive strategy balances the quality and fluency, providing fluent transmission without compromising too much on the quality. Fluency Preferred and Adaptive strategies will only take effect when sub-stream is enabled. In the case that sub-stream is not enabled, Quality Preferred sets the priority according to the network quality.

4.4.4 Network Service

Configure advanced network functions. Select Network Service options and click **Settings** or double click a service option to configure the parameters.



4.16 Network Service

【PPPoE Settings】



Figure 4.17 PPPOE

Enter PPPoE user ID and password provided by ISP (Internet Service Provider) . Save and restart the system. After restart, DVR will automatically connect the network using PPPoE. Upon successful network connection, the IP in **【IP Address】** will be changed automatically to the assigned dynamic WAN IP address.

Operations: After dialling up PPPoE successfully, look up in **【IP Address】** for the current IP address of the DVR. Use this IP address to access the unit from the user port.

【NTP Settings】

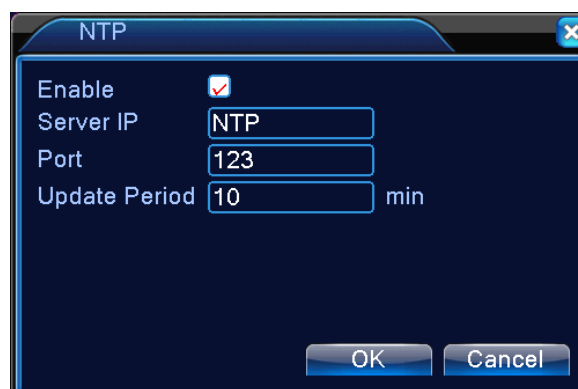


Figure 4.18 NTP Settings

Need to install NTP service on local PC.

Server IP: Enter the IP address of the PC on which the NTP server is installed;

Port: The default NTP port is 123. It may be set using the actual NTP server port settings;

Time Zone: London GMT+0 Berlin GMT +1 Cairo GMT +2 Moscow GMT +3 New Delhi GMT +5
Bangkok GMT +7 HK/Beijing GMT +8 Tokyo GMT +9 Sydney GMT +10 Hawaii GMT-10 Alaska
GMT-9 Pacific Time GMT-8 US Mountain Time GMT-7 US Central Time GMT-6 US Eastern Time
GMT-5 Atlantic Time GMT-4 Brazil GMT-3 Mid-Atlantic GMT-2;

Synchronization Interval: Time synchronization interval with NTP server. Default is 10 minutes.

【EMAIL Settings】

In the case of alarm events or alarm snapshots, notifications and snapshots will be sent to the specified email address.



4.19 EMAIL Settings

SMTP Server: Email server address which could be an IP address or a domain name (a domain name can only be identified after the confirmation of the correct DNS settings)

Port: Email server port number;

SSL: Whether the server requires SSL (Secure Socket Layer) encryption to log in;

User Name: The email server user name you applied for;

Password: Password corresponding to the user name;

Sender: Set email sender's EMAIL address;

Receiver: In the event of an alarm, notification is sent via email to specified receivers. Up to three recipients are allowed;

Title: The content of Email subject is able to be customized.

【IP Filter Settings】

Choose the White List to enter the IPs allowed to access the DVR. The list supports 64 IP settings;

Choose the Black List to block IPs which are not allowed to log in to the DVR through network. The list also supports 64 IP settings;

Tick the checkbox to delete the IP setting.

Note: If both lists contain the same IP address, Black List takes the priority.



Figure 4.20 IP Filter Settings

【DDNS】



Figure 4.21 DDNS Settings

Identify server using dynamic domain name.

Local Domain Name: The domain name registered with DDNS service provider;

Server Domain Name: The domain name of the DDNS;

Port: DDNS access port number;

User Name: The account name registered with DDNS service provider;

Password: The account password registered with DDNS service provider;

After the DDNS is successfully configured and enabled, you may access the DVR by entering your registered domain name directly in the IE address bar.

Note: DNS must be set up properly in the Network Settings

【FTP Settings】

In the event of an alarm, or alarm linkage video recording or snapshot, FTP is used to upload the video and snapshot to the specified FTP server.

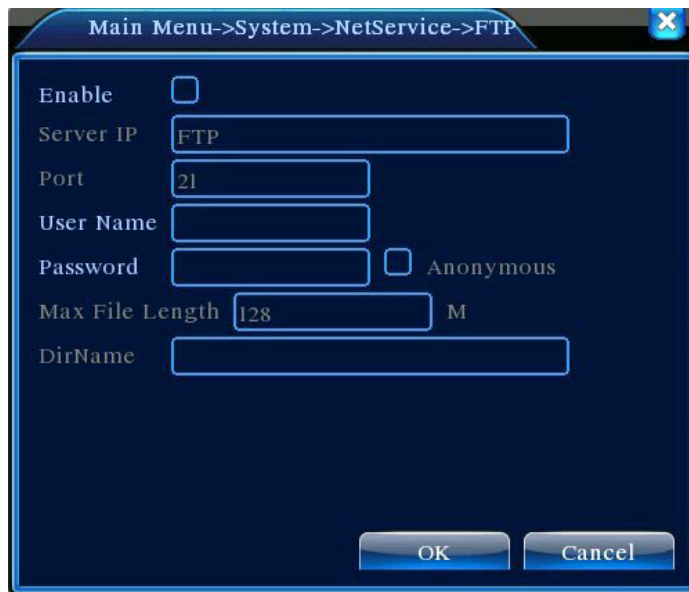


Figure 4.22 FTP Settings

【Enable】: Highlight to enable the settings;

【Server IP】: IP address for the FTP server

【Port】: FTP port number. The default port is 21

【User Name】: Permitted FTP user name

【Password】: Corresponding user password

【Maximum File Length】: The maximum size of each uploading file pack. The default is 128M

【Remote Directory】: Directory of the uploading files

【ARSP Setting】

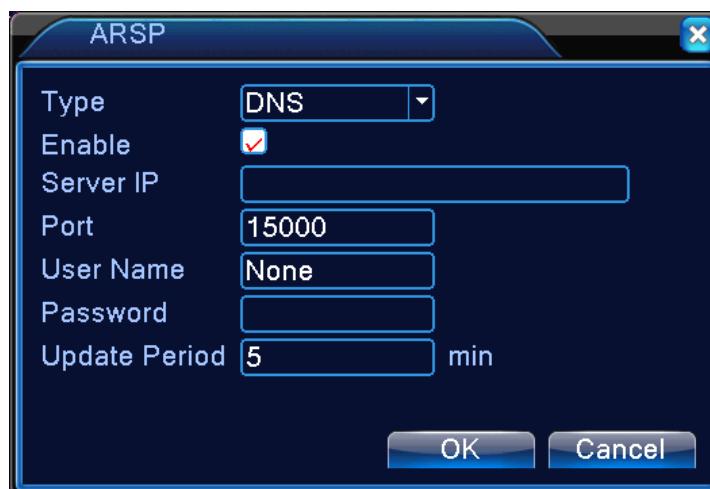


Figure 4.23 ARSP Settings

【Alarm Server】

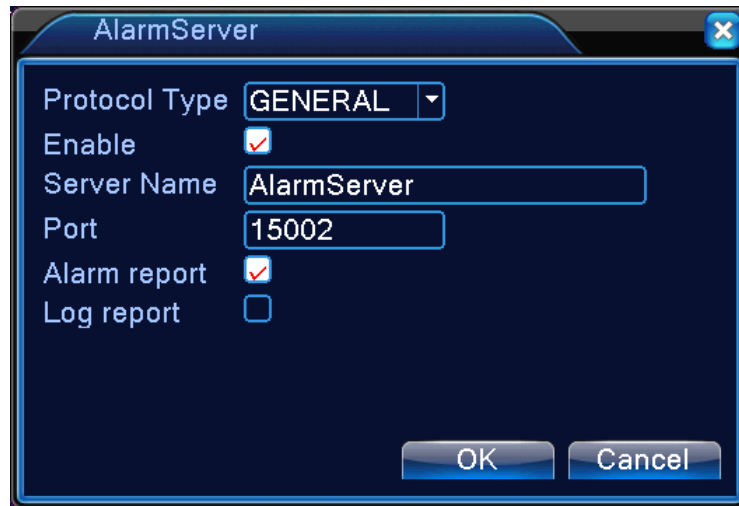


Figure 4.24 Alarm Server



Figure 4.25 Wireless Server

【Enable】 Choose Enable to make all settings available.

【Type】 Dial type,default AUTO

【Wireless AP】 3G access point

【Dial Number】 3G Dial Number

【User Name】 User name of 3G

【Password】 Password of dial user

【IP Address】 IP address,got from dial

【UPnP】

UPnP protocol automatically forwards port mapping on the router. When using the function, make sure that the UPnP on the router is enabled.

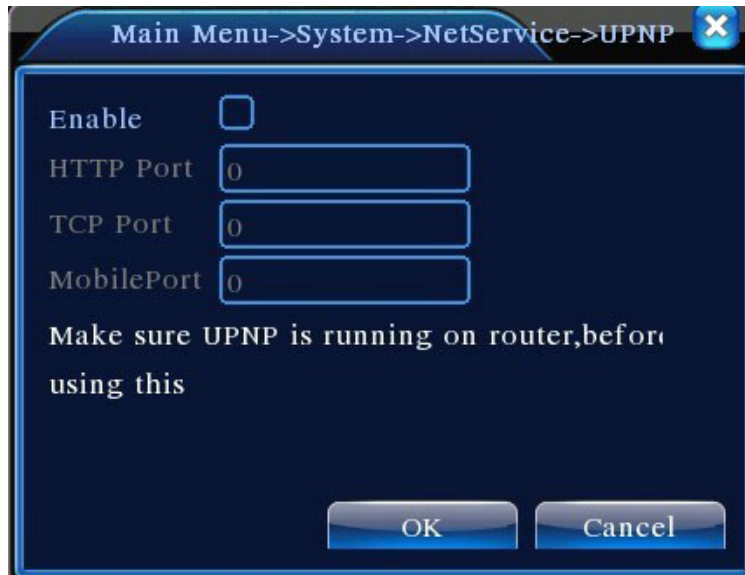


Figure 4.26 UPnP Settings

【Enable】 Highlight to enable the UPnP function. Settings can only be activated after Enable is ticked;

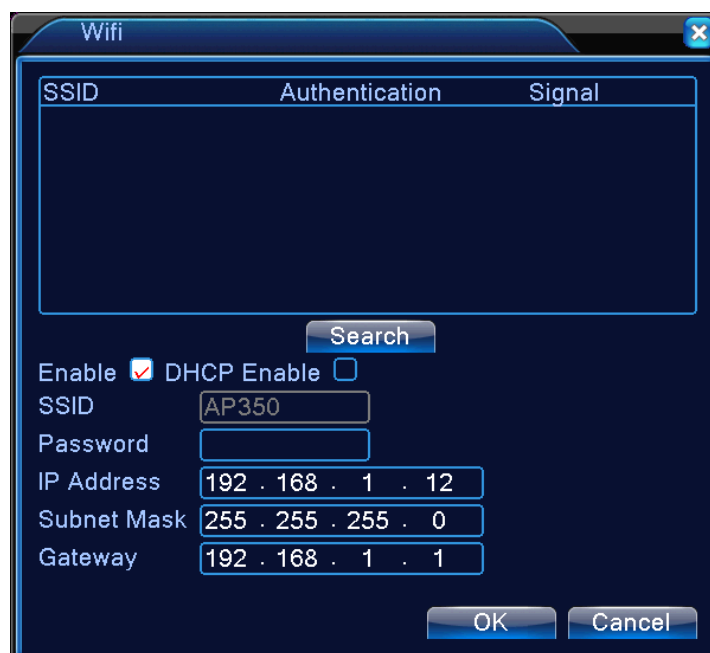
【HTTP】: Router will automatically assign a port number to the device. Need to enter the port number to start an IE browser

【TCP】: Router will automatically assign a port number to the device. Monitoring using client software will go through this port

【MobilePort】: Router will automatically assign a port number to the device. Mobile monitoring is implemented through this port

【WIFI】

DVR connect to wireless router via WIFI module, then to visit it through IP address, the precondition of using this function is to make sure the DVR have connected with WIFI modern.



Pic 4.27 W I F I configure

【Search】 click 【search】 to search all the available wireless device in current range.

【enable】 tick it to enable firstly, then go for further setting.

【auto obtain IP address】 tick it to enable, device will auto obtain a WIFI IP.

【SSID】: wireless LAN name, auto match to the wireless device u connected.

【Password】: wireless network password of router ;

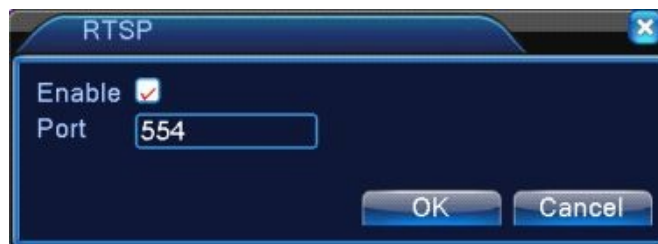
【IP address】 : to set the IP address of device, default is 192.168.1.12

【subnet mask】 :set subnet mask of device, default is 255.255.255.0

【gateway】: set gateway of device, default is 192.168.1.1

【RTSP】

To do surveillance via cross-browser (Safari, Firefox, Google chrome) and VLC software. **This function only for monitor but can not control the device.**



Pic 4.28 RTSP setting

【Enable】: means enable, tick it firstly before setting.

【Port】: the default port is 554.

【Cloud】:

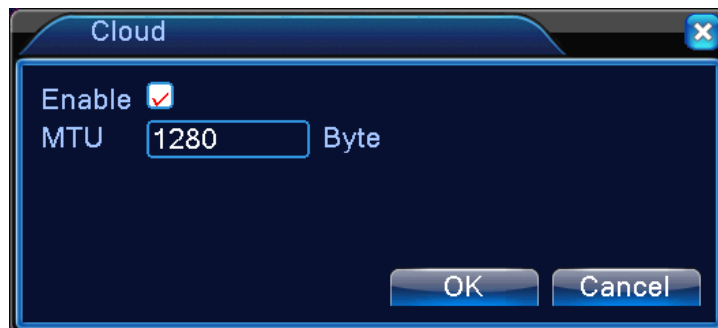


Figure4.29 Cloud Setting

【PMS】:



Figure4.30 PMS Setting

4.4.5 Output Mode

Configure the parameters for video output signals, including pre-output mode and encoded output mode.

Pre-output: Picture mode for local preview, including channel name, time title, channel title, recording status, alarm status, video streaming, transparency, area coverage;

Encoded output: Picture mode for network monitoring and video file, including channel name, time title, channel title, recording status, alarm status, video streaming, transparency, area coverage, time title and channel title.

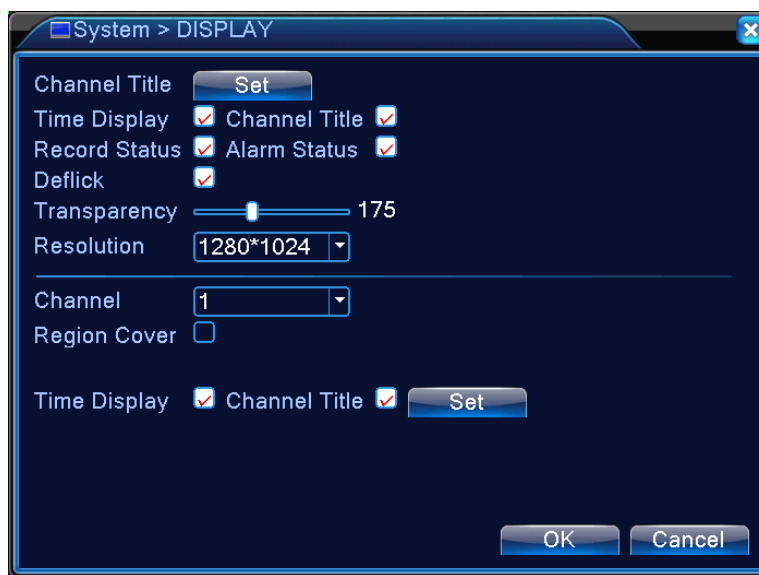


Figure 4.31 Output Mode

【Channel Title】 Click channel name **Change** button to enter channel name menu and change Channel Name (support up to 16 Chinese characters or 25 English alphabet letters);

【Time Display】 Highlight sign to display system date/time on monitoring screen;

【Channel Title】 Highlight sign to display system channel number on monitoring screen;

【Record Status】 Highlight sign to display system recording status on monitoring screen;

【Alarm Status】 Highlight sign to display system alarm status on monitoring screen;

【Video Streaming Information】 Highlight sign to display video streaming information on the 9th screen in 9-screen preview;

【Transparency】 Select the transparency of the background image ranging from 128~255;

【Resolution】 Set display resolution;

【Channel】 Select channel number to set encoded output;

【Region Cover】 Highlight . Select **Area Coverage number** button and click **Set** button to enter the corresponding channel. User can use the mouse to choose coverage area of any size (covered areas for video output are displayed as dark blocks);

【Time Display】 and 【Channel Title】 set the display position for Time Title and Channel Title.

4.4.6 PTZ Settings

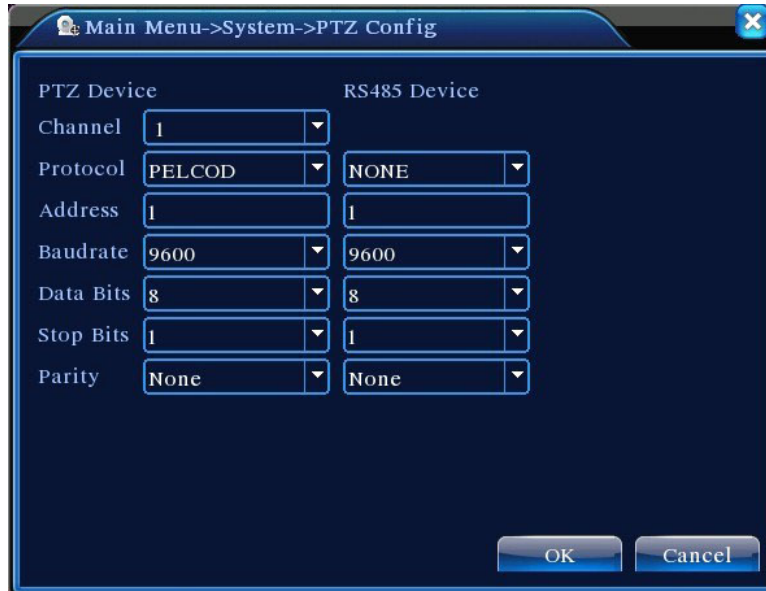


Figure 4.32 PTZ Settings

【Channel】 Select input channel for dome camera;

【Protocol】 Select proper dome camera protocol for corresponding brand and model (e.g.: PELCOD)

【Address】 Set address for the corresponding dome camera. The default is 1 (Note: The address set here must match the dome camera address or the dome camera cannot be controlled);

【Baud Rate】 Select the dome camera baud rate to control PTZ and camera on the corresponding channel. The default is 115200;

【Data Bits】 Available options: 5-8. The default is 8 bits;

【Stop Bits】 Two options are 1 and 2. The default is 1;

【Parity】 Includes odd parity, even parity, parity flag, none parity. The default is None.

4.4.7 Serial Port Settings

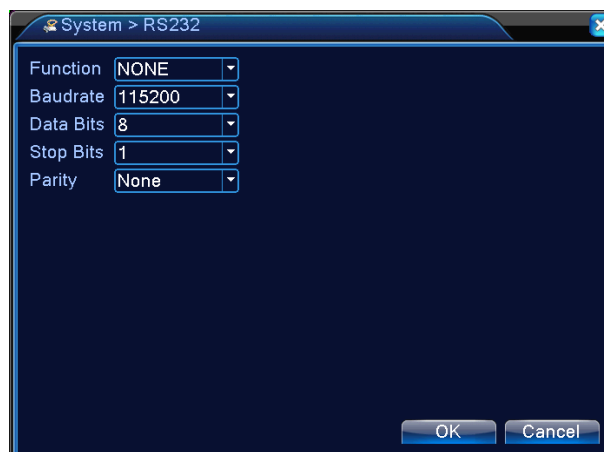


Figure 4.33 Serial Port Settings

【Function】 Ordinary serial port is used for serial debug and upgrade, as well as certain serial port peripherals;

【Baud Rate】 Select the appropriate baud rate length;

【Data Bits】 Available options: 5-8;

【Stop Bits】 Two options are 1 and 2;

【Parity】 Includes odd parity, even parity, parity flag, none parity.

4.4.8 Auto Sequence Settings





Set screen auto sequence display. Highlight to enable the mode. Available selections include single mode auto sequence such as single screen, 4-screen, 9-screen, and 16-screen or mixed mode auto sequence.



Figure 4.34 Auto Sequence Settings

【Interval】 Set time interval for auto sequence screen switch. Setting range is 5-120 seconds;

【Return AfterFinished】 When alarm ends, return to multi-screen preview

Note: In preview mode, click the icons  /  on upper right corner of the page to turn on/off the auto sequence ( indicates the auto sequence is on, and  indicates off) .

4.5 Management Tools

Management Tools menu includes: **Disk Management, User Management, Online Users, Output Adjustment, Auto Maintenance, Restore Default, System Upgrade, and System Information.**

4.5.1 Channel Management

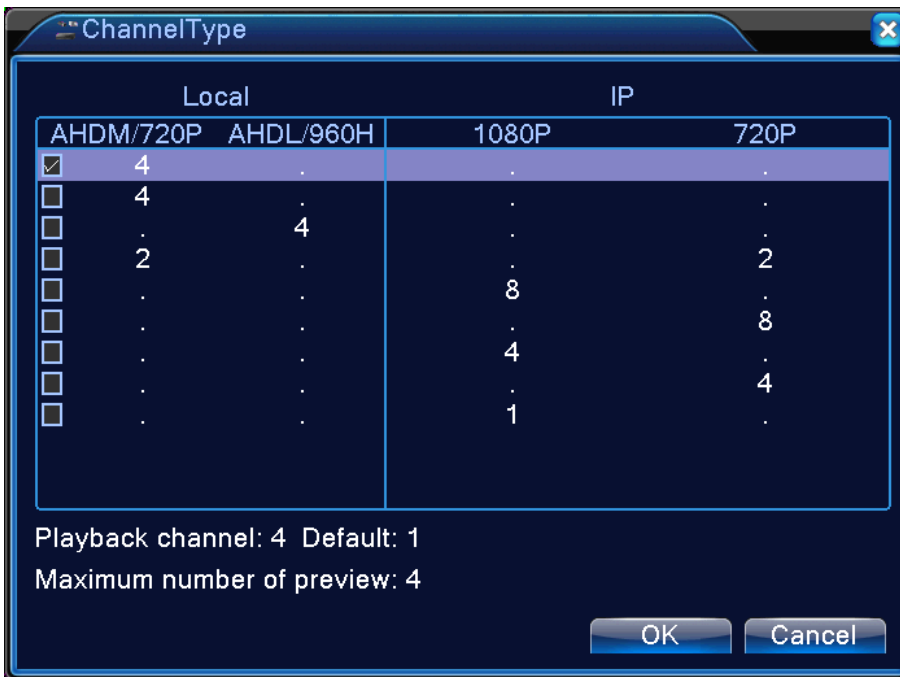
***Remark: all series product support this function.**

Digital manage including digital channel, channel status, and channel mode
(Remark: there is only analog mode if device is under full analog mode):



Pic — 4.35channel manage interface

Channel mode:



Remark: this series of product with full analog channel mode, hybrid mode and full digital mode, and different model with different channel mode, user can shift the mode freely if necessary.

4.5.2 Hard Drive Management

Hard Drive Configuration. The menu shows current disk information including the number of disks connected, access interface, type, status, and aggregate capacity. Hard Drive Operation, including: set read/write disk, read-only disk, redundant disk, disk format, and error recovery. Select the hard drive and click the functional keys on the right side to execute.

Note: Read/Write Disk: May read and write data;

Snapshot Disk: Image storage disk. May read and write data;

Read-only Disk: The device can only read data from but not write onto the disk;

Redundant Disk: If there are already read/write disks, redundant disks will duplicate the video files.

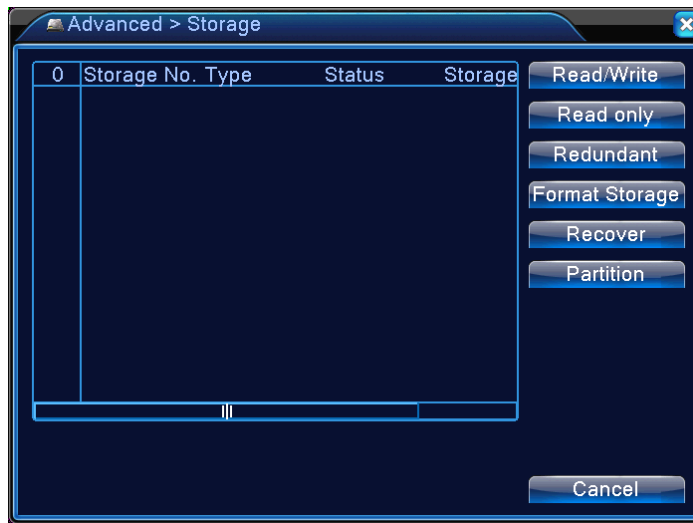


Figure 4.36 Hard Drive Management

4.5.3 User Management

Manage local user permissions.

- Note:**
1. All of the below user names and group names may have a maximum of 8 characters. The beginning and the end of the string cannot be left blank while spaces are allowed between characters. Legitimate characters: Alphabet letters, numbers, underscores, hyphens, and dots. Other characters are not allowed;
 2. There are no limit to the number of users and groups. User groups can be added or deleted based on user's need: Factory default has two levels: user\admin. User can set his own group attributes. Members of a group can specify any functional rights permitted in the group;
 3. User Management adopts group and user two-level structure. The group and the user cannot share the same name. Each user must belong to a group and only to one group.



Figure 4.37 User Management

【Modify User】 Modify the attributes of an existing user;

【Modify Group】 Modify the attributes of an existing user group;

【Modify Password】 Modify user password. Password can be set to 1-6 letters. The beginning and end of the password cannot be left blank while spaces are allowed between letters.

Note: User with administrator rights is able to change not only his own password but also other users' passwords.

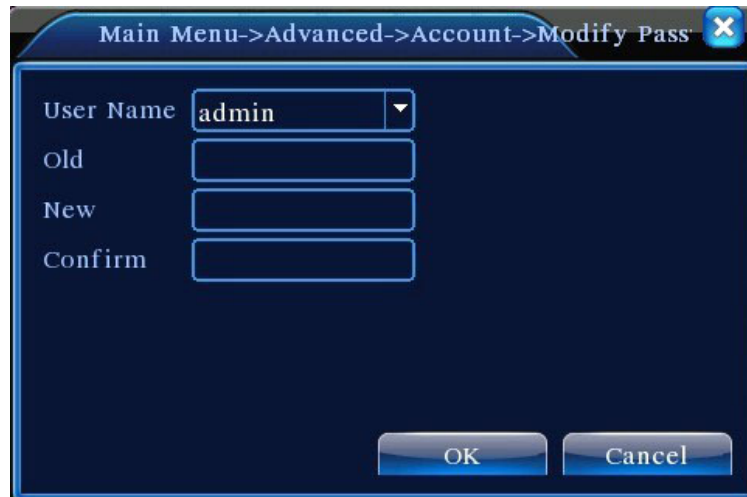


Figure 4.38 Modify Password

【Add User】 Add group members and set user permission as shown in Figure 4.31. Enter Add User menu, input user name and password, select the belonging group, and select whether the name can be shared. Shared means that the account can be used by multiple users simultaneously.

Once the belonging group is selected, the user permission can only be a subset of that group. It can not overpass the permission attribute of the group.

For the convenience of user management, we recommend setting the permission for regular users at a lower level than for advanced users.

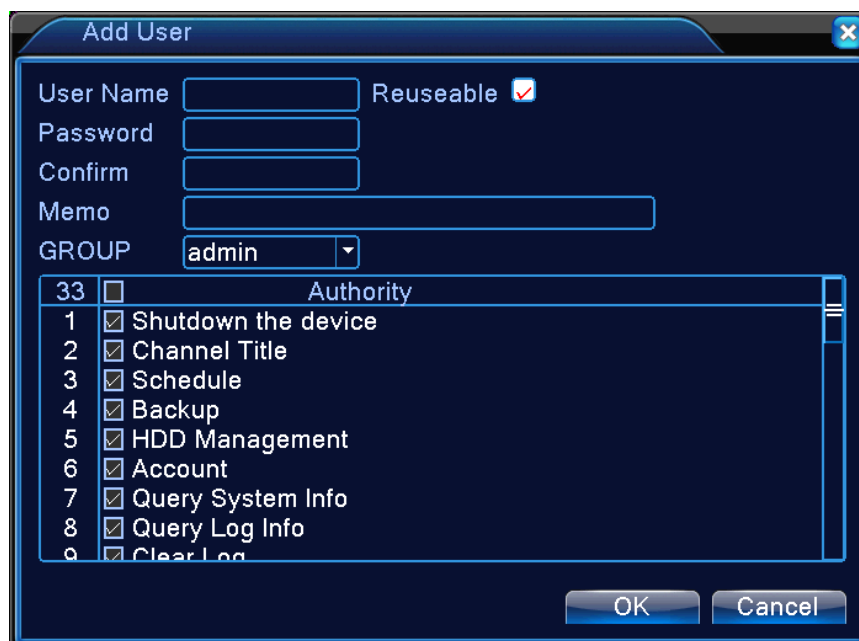


Figure 4.39 Add User

【Add Group】 Add a new user group and set group permissions as shown in Figure 4.32. There are 36 permission items to choose from, including Device Shutdown, Live Surveillance, Playback, Recording settings, Video Backup, etc.

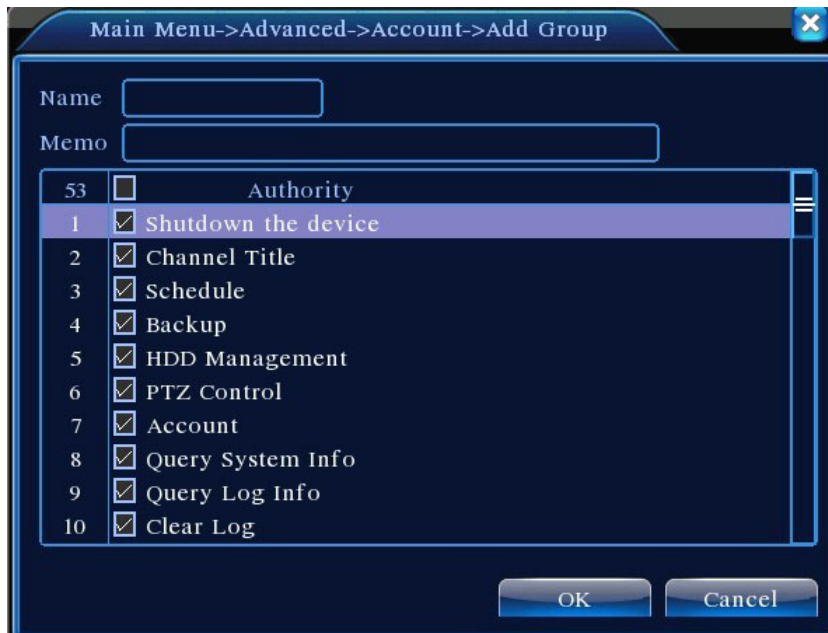


Figure 4.40 Add Group

【Delete User】 Delete existing user. In Figure 4.29, select the user to be deleted. Click **Delete User** button;

【Delete Group】 Delete existing group (make sure there is no user in the group) . In Figure 4.29, click **Delete Group** button to show Figure 4.33. Select the group to be deleted and click **Delete** button.



Figure 4.41 Delete Group

4.5.4 Online User

View information on the network users connected to the local DVR. You may also disconnect the selected network users (by tick in checkbox) . The account will be frozen until the next reboot.

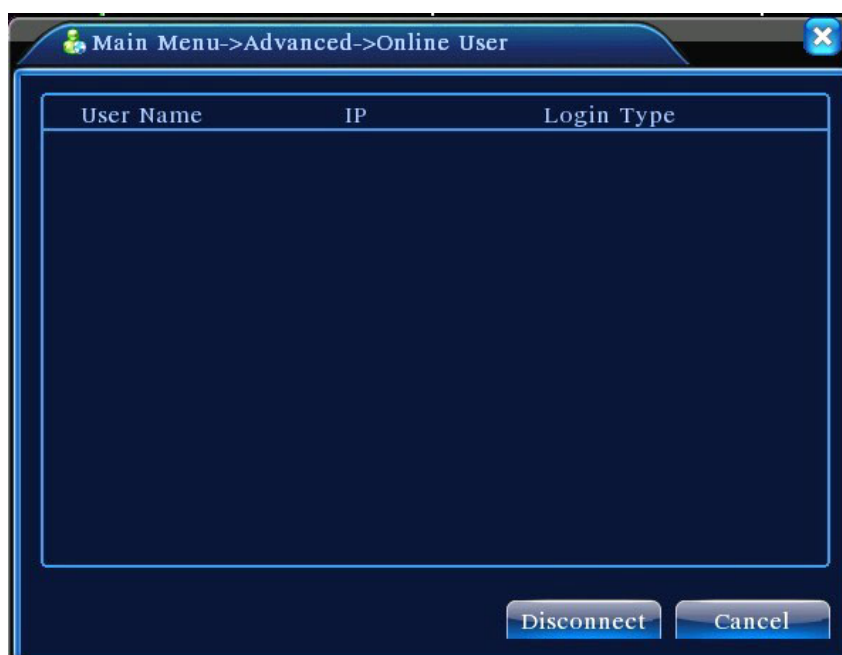


Figure 4.42 Online User

4.5.5 Output Adjustment

Same as “3.5.7 Output Adjustment”.

4.5.6 Auto Maintenance

User can set their own schedule to automatically restart the system and delete the files with set time limit.

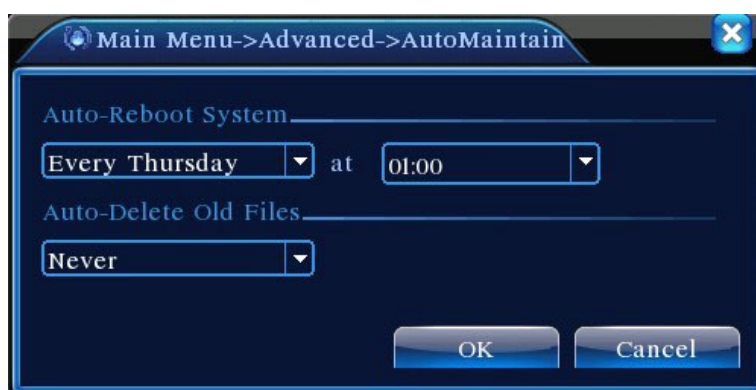


Figure 4.43 Auto Maintenance

【Auto On/Off Time】: Set timer to automatically turn on and off the DVR.

4.5.7 Restore Default

Restore the system to factory default configuration (may select in the menu specific items that need be restored).



Figure 4.44 Restore Default

4.5.8 System Upgrade



Figure 4.45 System Upgrade

【Upgrade Position】 Select USB interface;

【Upgrade File】 Select the file being upgraded.

4.5.9 Device Information

Provide device information on DVR interface for clients' convenience

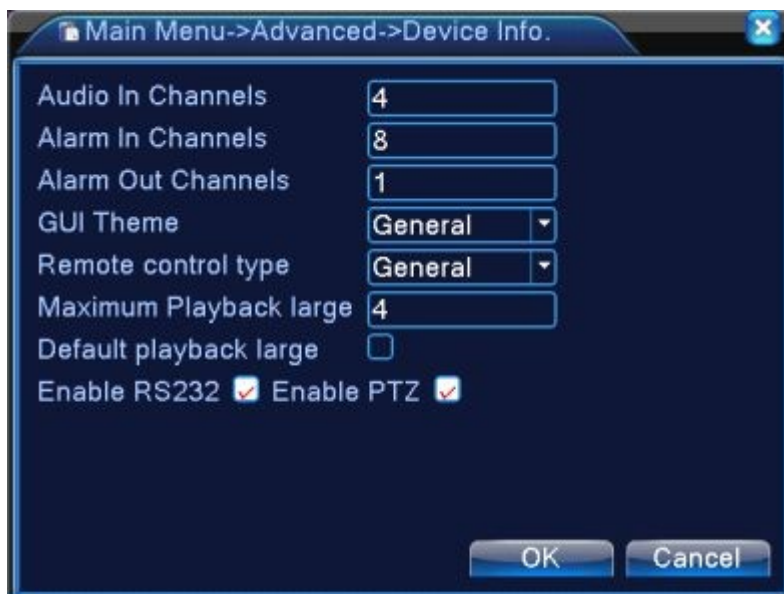


Figure 4.46 Device Information

4.5.10 Import/Export

Export current log setting, import the new setting.

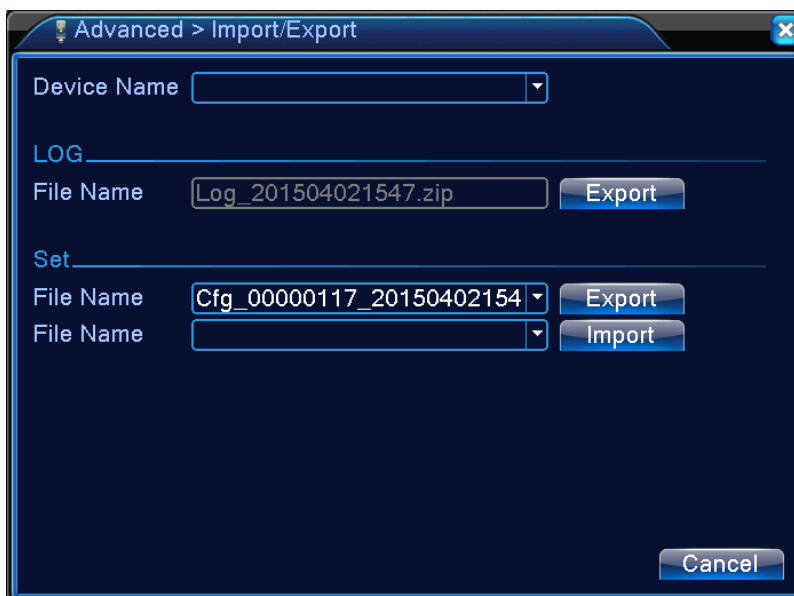


Figure 4.47 Import/Export

4.6 System Information

Display DVR information on: **Hard drive, Streaming statistics, Log, and Version Information.**

4.6.1 Hard Drive Information

Display the status of the installed hard disk, including the types of the disks, aggregate size, free space, and recording time.

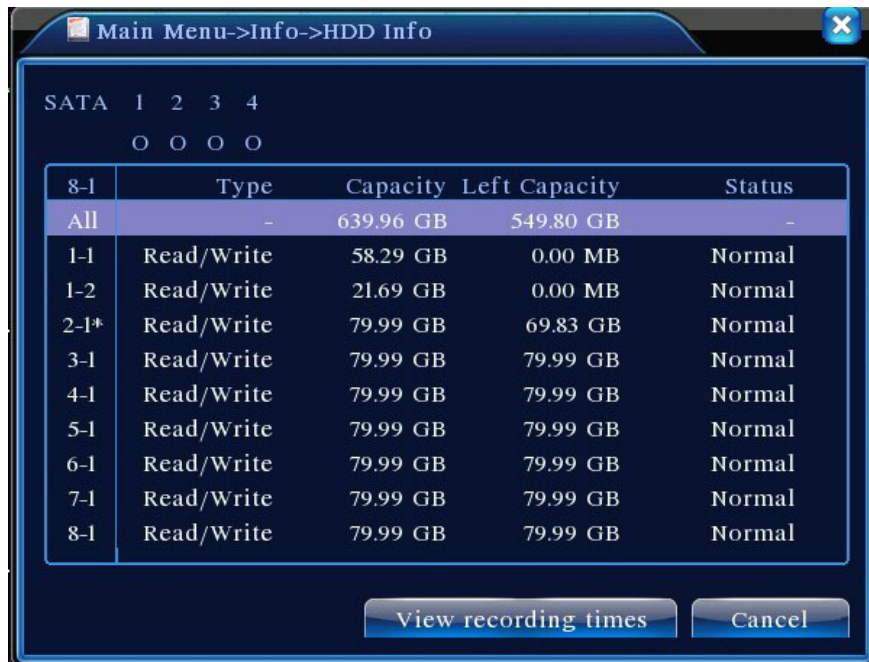


Figure 4.48 Hard Drive Information

Tip: In Hard Drive Information, ○ means the disk works properly, X indicates a failure, and – means not installed. If the user needs to replace a bad disk, shut down the device before removing the bad disk and install the new one.

An asterisk “*” after the disk number indicates that it is the current work disk (e.g., 1*). If the corresponding disk is damaged, there will be only “?” marks in the information.

4.6.2 BPS

Live display video stream (Kb/S) on the channel and disk space used (MB/H). The oscillogram demonstrates the change in streaming.

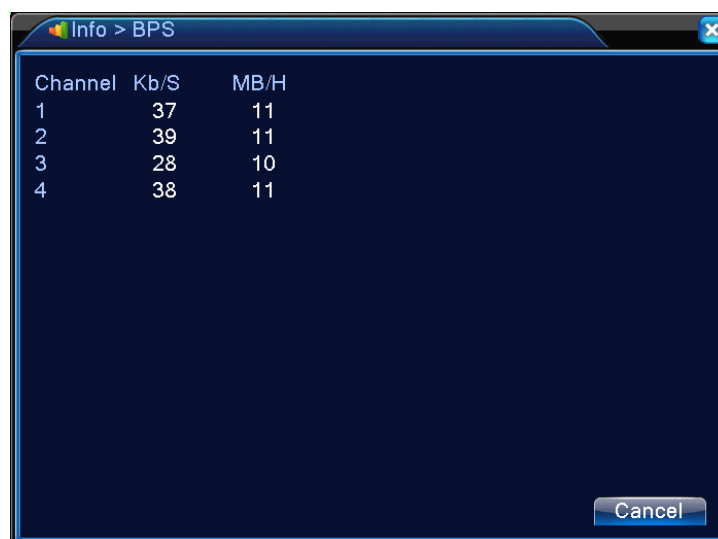


Figure 4.49 BPS

4.6.3 Log

View system log based on the search method setup.

Log is categorized into: system operation, configuration, data management, alarm event, recording operation, user management, and file management. To search the log by time period, press the **Search** button. The system will display the log in table format (each page contains 128 lines). Press **Page Up** or **Page Down** to turn the page and **Clear** to empty all logged information.

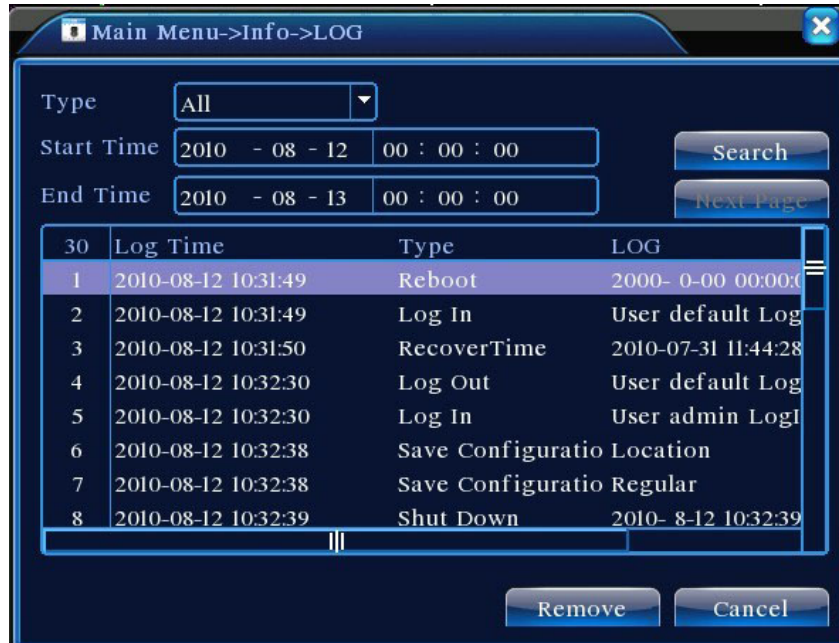


Figure 4.50 Log

4.6.4 Version Information

Show basic information on the device, including hardware information, software version and release time.

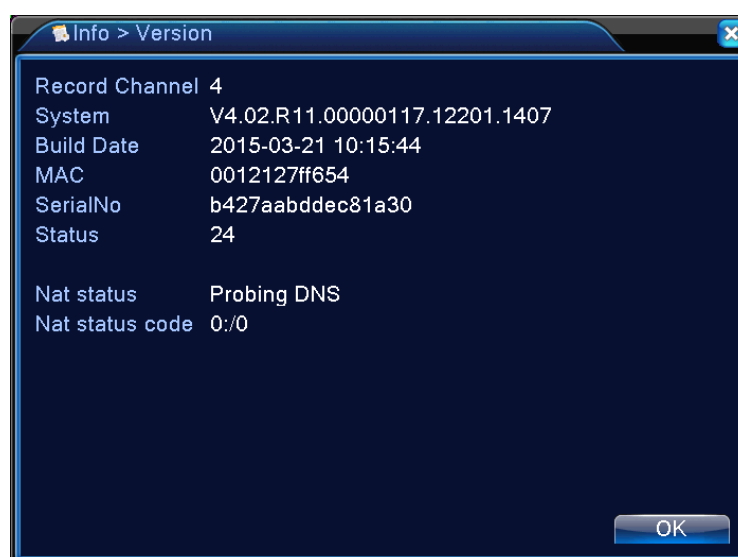


Figure 4.51 Version Information

4.7 System Shutdown

See Chapter “3.18 System Shutdown”.

Chapter 5: Cloud Technology Basic Operation

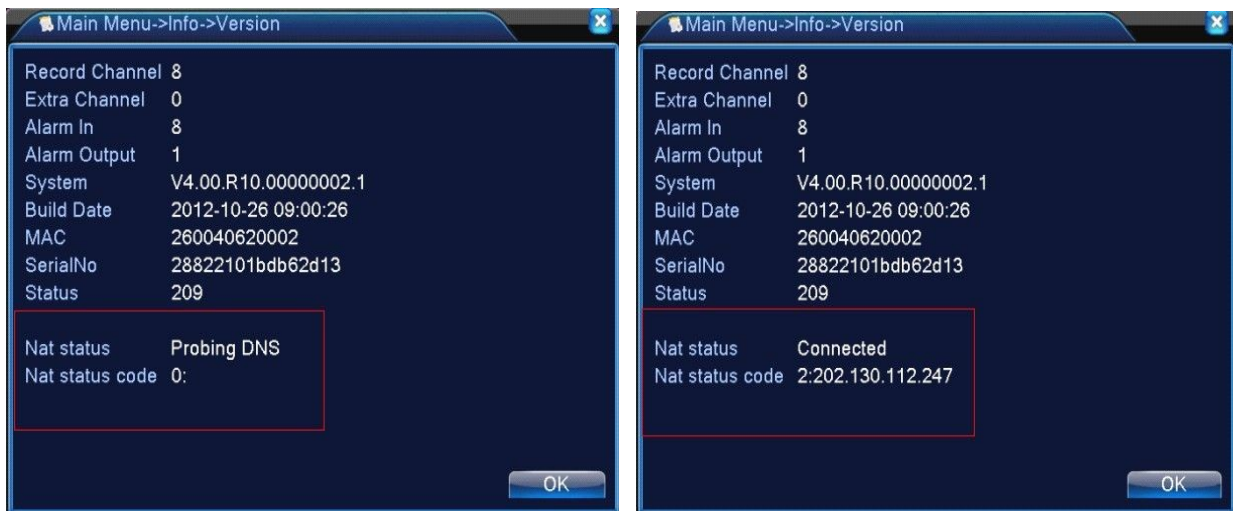
5.1 Cloud technology monitor

Cloud technology make the device one step on net, greatly bring convenience for customer to monitor via wide area network, this technology is using the serial no to visit device.

***Remark : the device that using cloud technology should be in the WAN(Wide Area Network) firstly.**

◆ Check the connecting status of cloud technology

Connect device to WAN firstly, then enter【Main menu】>【Info】>【Version】to check whether the device successfully connect to the cloud server or not.



Connect failed interface

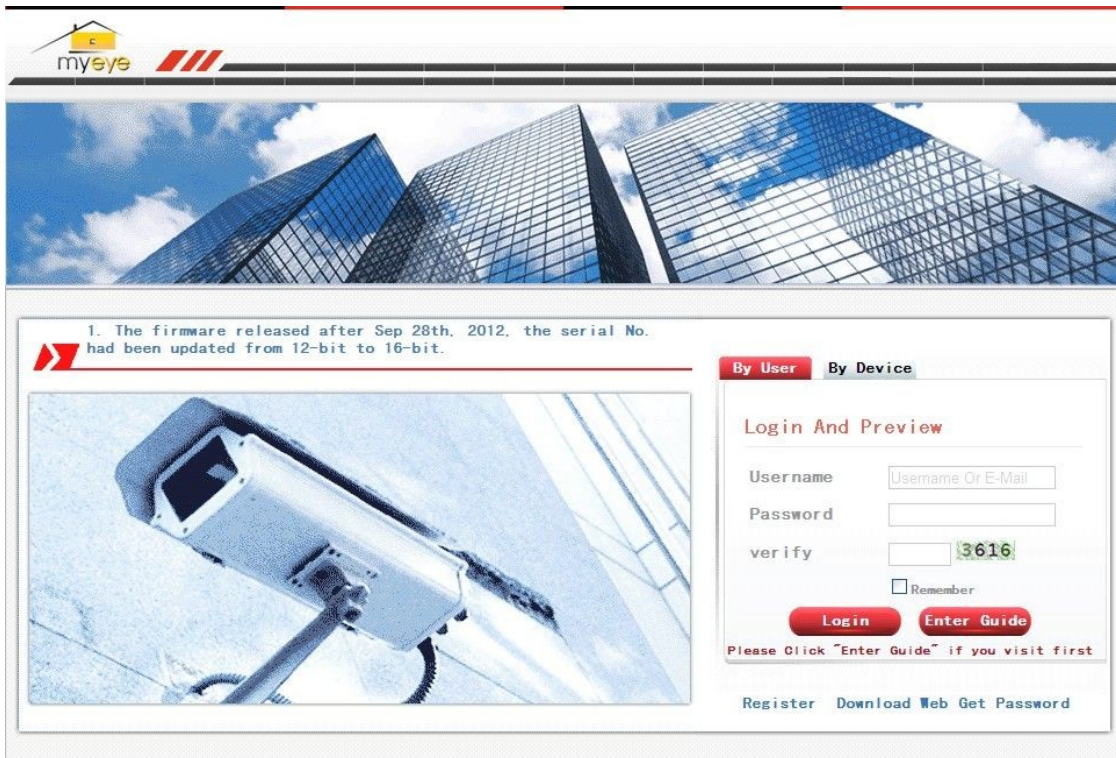
successfully connect interface

Pic 5.1 cloud technology server connection status

◆ Log in cloud server

Visit <http://xmeye.net> to see below log in page, it divided into two mode: **by user** and **by device**, user can base on their need to log in freely.

***Remark: to log in “by user”, the user need to register at the first time.**



Pic.5.2 Log in by cloud server

◆ **Log in by user**

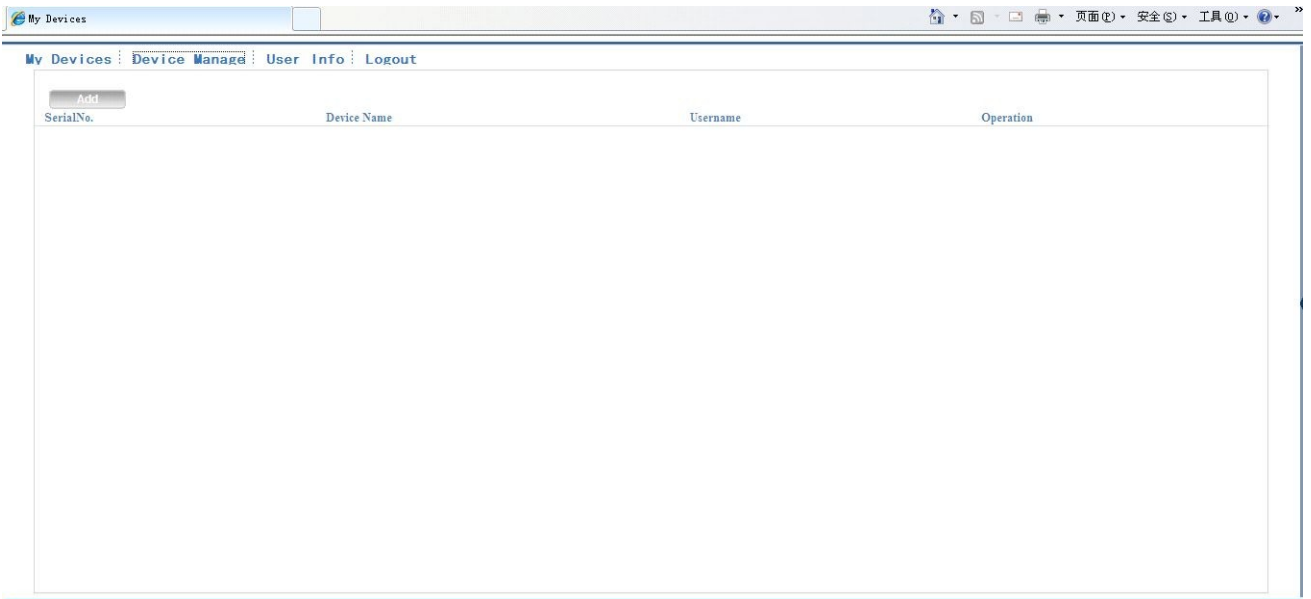
Customer use their registered user name and password to log in, will see below interface



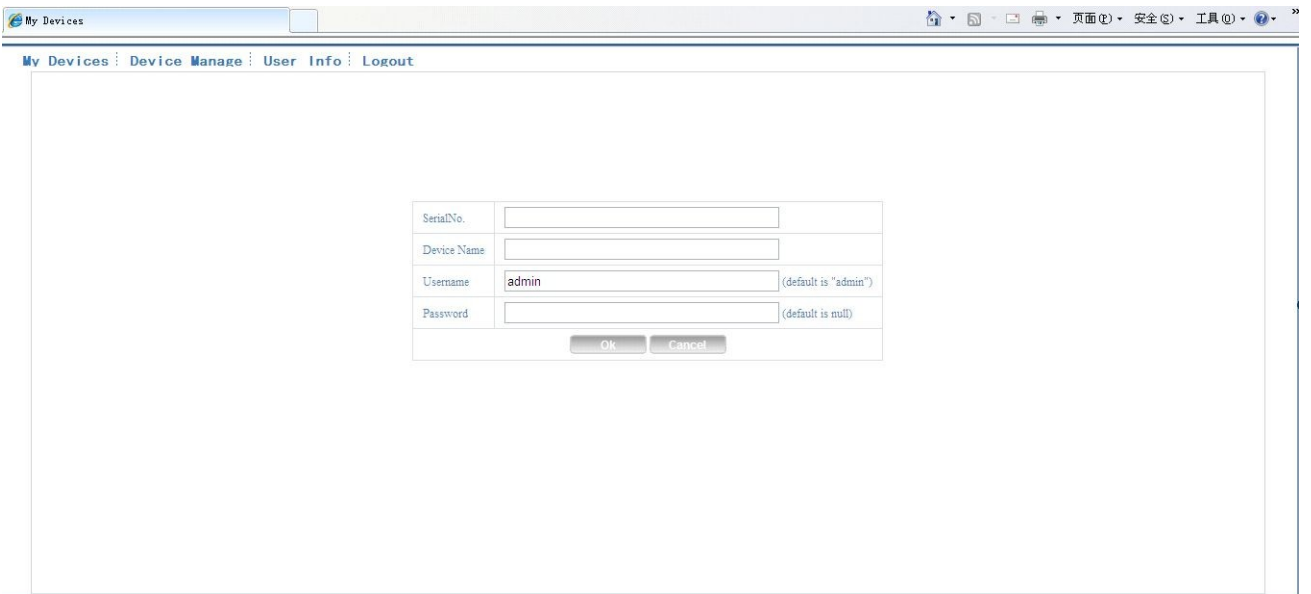
Pic 5.3 cloud technology operation interface

Device manage

Mainly use to add device, click "add" to add the serial number of device to be monitored.



Pic 5.4 device manage interface

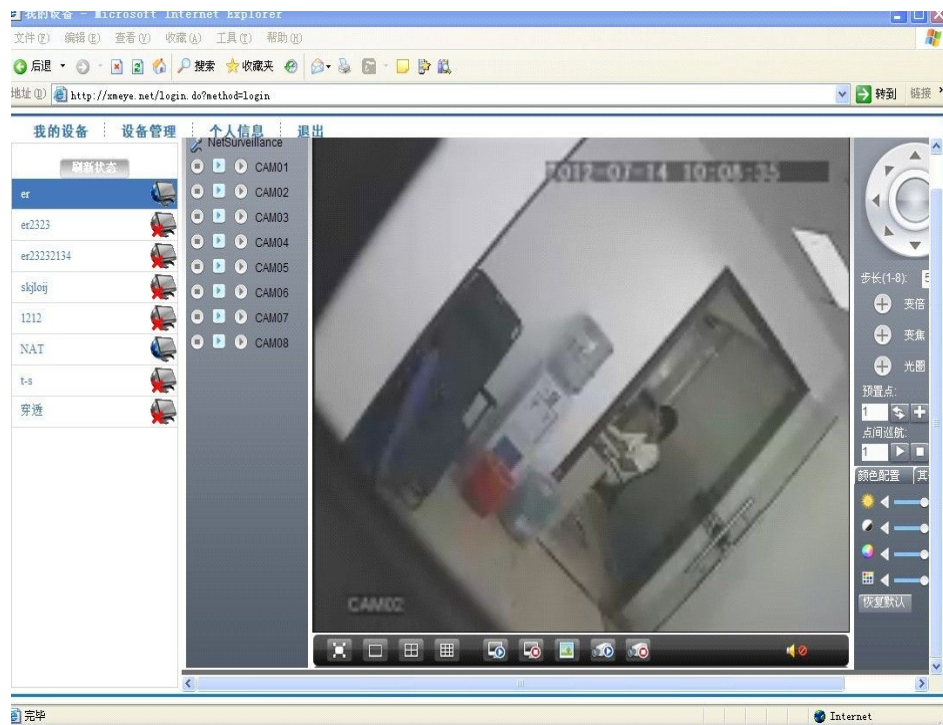


Pic 5.5 add interface at device manage

***Remark : in pic 5.5, the user name means the user name of monitored device, password means the password of related user.**

My Device

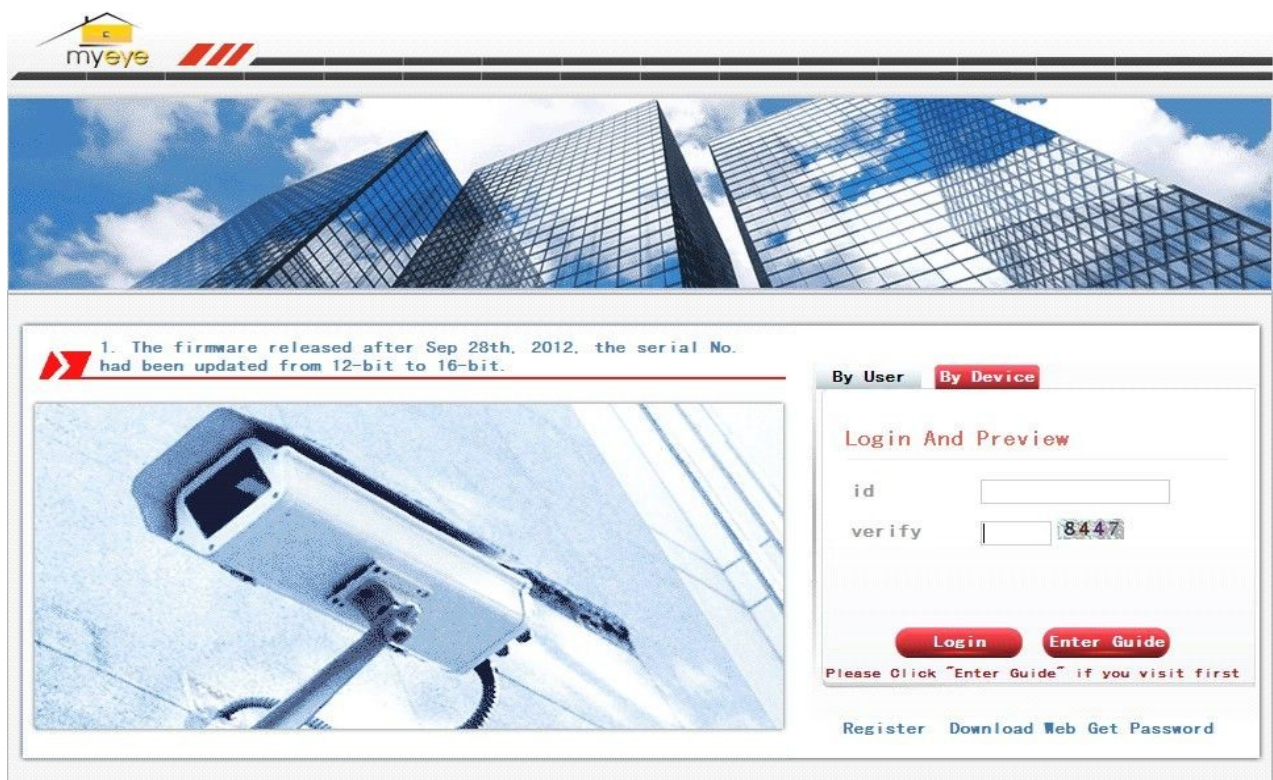
Mainly show all the added device here, click the on-line device name, can access to control this device accordingly.



Pic 5.6 monitor page - log in by user

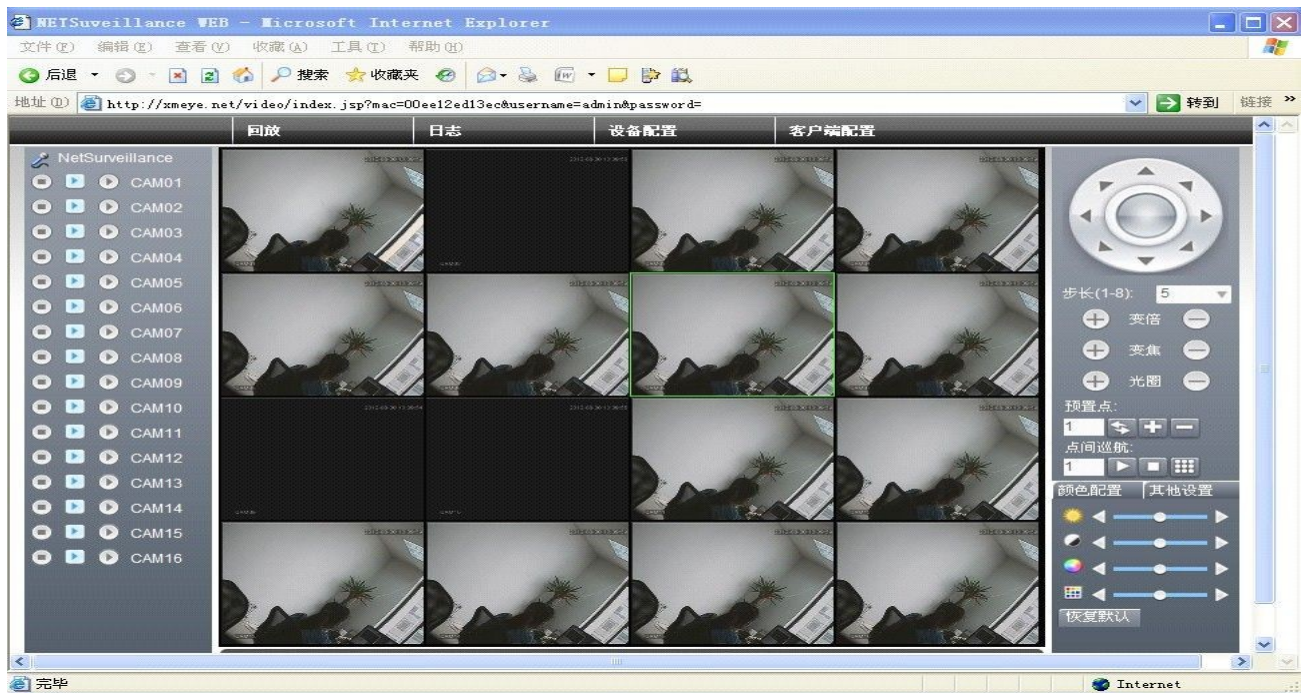
*Remark : the icon of “**✗**” means offline, the device do not connect to server successfully.

◆ Log in by device



Pic 5.7 interface of log in by device

Input the serial number of device and the verify code to monitor and control the device directly.



Pic: 5.8 monitor page - log in by device

Chapter 6 FAQ and Maintenance

6.1 FAQ

If you encounter a problem not listed below, please contact your local customer service or call our headquarters for assistance. We are more than happy to assist.

1、 Q: DVR will not start after power-on

A: Possible cause:

- 1 Input power is not correct
- 2 Switching power supply has bad wire connection
- 3 Switching power supply is damaged
- 4 Upgrade error
- 5 Damaged hard drive or hard drive cable
- 6 Front panel failure
- 7 DVR motherboard failure

2、 Q: DVR restarts automatically few minutes after being turned on or freezes frequently

A: Possible cause:

- 1 Input voltage unstable or too low
- 2 Hard drive has bad tracks or damaged cable
- 3 Switching power supply has insufficient power
- 4 Front-end video signal is unstable
- 5 Poor ventilation; excessive dust; poor operating ambience
- 6 DVR hardware failure

3、 Q: Hard drive not detected after startup

A: Possible cause:

- 1 Hard drive cable is not connected
- 2 Hard drive cable is damaged
- 3 Hard drive is damaged
- 4 Bad motherboard SATA port

4、 Q: No video output on one or more channels

A: Possible cause:

- 1 Program not compatible. Re-upgrade with right program
- 2 Image brightness becomes 0. Restore default settings
- 3 No video signal input or signal too weak
- 4 Has channel privacy mask (or screen view blocker) set up
- 5 DVR hardware failure

5、 Q: Real-time video problems, such as severe distortion on video color and brightness.

A: Possible cause:

- 1 When using BNC output, if NTSC and PAL format selection is incorrect, video image becomes black and white
- 2 DVR and monitor impedance mismatched
- 3 Video transmission distance is too far or video signal attenuates too much in transmission line
- 4 DVR color and brightness settings are incorrect

6、 Q: Local playback search finds no video

A: Possible cause:

- 1 Hard drive cable or jumper error
- 2 Hard drive is damaged
- 3 Upgraded with a program different to the original program in the system
- 4 The video being searched has already been overwritten
- 5 Recording function is not turned on

7、 Q: Local search returns blurred video

A: Possible cause:

- 1 Video quality setting is too low
- 2 Program data read error; Video streaming very low; Full screen mosaic during playback.
Usually DVR will return to normal after restart
- 3 Hard drive cable and jumper error
- 4 Hard drive malfunction
- 5 DVR hardware failure

8、 Q: No sound in monitoring

A: Possible cause:

- 1 Not equipped with active pickups
- 2 Speakers not switched on
- 3 Audio cable damaged
- 4 DVR hardware failure

9、 Q: Audio in monitoring but none in playback

A: Possible cause:

- 1 Setup error: audio option is not turned on
- 2 Corresponding channel is not connected to video. Video plays back intermittently with blue screen

10、 Q: Time display is not correct

A: Possible cause:

- 1 Setup wrong.
- 2 Bad battery connection or power low
- 3 Crystal resonator not working properly

11、 Q: DVR cannot control PTZ

A: Possible cause:

- 1 Front-end PTZ malfunction
- 2 PTZ decoder settings, wiring, or installation is incorrect
- 3 Incorrect cable wiring
- 4 PTZ settings in DVR are incorrect
- 5 PTZ decoder and DVR protocol do not match
- 6 PTZ decoder and DVR address do not match
- 7 When connected with multiple decoders, PTZ decoder needs to add a 120 ohm resistance to eliminate the reflection and impedance matching between the far ends of A/B cables, or PTZ control will be unstable
- 8 Distance too far

12、 Q: Motion detection does not function

A: Possible cause:

- 1 Time period settings are not correct

- 2 Incorrect settings for motion detecting areas
- 3 Sensitivity sets too low
- 4 Hardware of certain versions have limits

13、 Q: Cannot log in from client end or through WEB

A: Possible cause:

- 1 Client cannot install or normally display whether the OS is Win98 or Win me: We recommend upgrading to version Win2000 SP4 or higher, or installing an earlier version of the customer software.
- 2 ActiveX control is disabled
- 3 Version dx8.1 or higher is not installed. Upgrade video card driver
- 4 Network connection error
- 5 Network setup error
- 6 Incorrect user name and password
- 7 Version of client software does not match the program version of DVR

14、 Q: No video image or only mosaic on network preview and video playback screen

A: Possible cause:

- 1 Insufficient network bandwidth
- 2 Client's PC may have resource constraints
- 3 DVR may have the area masked or privacy protection on the channel
- 4 The user logged in has no monitoring permission
- 5 The quality of the real-time DVR video output is poor

15、 Q: Unstable network connection

A: Possible cause:

- 1 Unstable network
- 2 IP address conflict
- 3 MAC address conflict
- 4 Bad network card in PC or DVR

16、 Q: Burn/USB backup error

A: Possible cause:

- 1 Burner shares the same cable with hard drive
- 2 Excessive amount of data occupies too much CPU resource. Stop recording before backup
- 3 The amount of data exceeds the device capacity and results in burn error
- 4 Incompatible backup device
- 5 Backup device damaged

17、 Q: Keyboard cannot control DVR

A: Possible cause:

- 1 DVR serial port settings are incorrect
- 2 Address incorrect.
- 3 Insufficient power to support multiple transformers. Need to provide separate power supply to each transfer.
- 4 Transmission distance is too far

18、 Q: Cannot disarm the alarm signal

A: Possible cause:

- 1 Alarm settings are incorrect
- 2 Alarm output turned on manually
- 3 Input device malfunction or incorrectly connected
- 4 Problem with certain versions of the program. Upgrade the program to solve problem.

19、 Q: Alarm is not functioning

A: Possible cause:

- 1 Alarm settings are incorrect
- 2 Incorrect alarm cable wiring
- 3 Incorrect alarm input signal
- 4 The alarm device is connected to two loop circuits simultaneously

20、 Q: Remote control is not functioning

A: Possible cause:

- 1 Remote control address incorrect
- 2 Remote control is out of operating range or angle
- 3 Battery in the remote control is out of power
- 4 Remote control or DVR front panel is damaged

21、 Q: Saved recording is short

A: Possible cause:

- 1 Excessive streaming due to poor quality of front-end camera, dirty lens, camera installed in backlight, or incorrect aperture adjustment
- 2 Insufficient hard drive capacity
- 3 Damaged hard drive

22、 Q: Downloaded file will not play

A: Possible cause:

- 1 Media player is not installed
- 2 No graphic accelerator software version DX8.1 or higher is installed
- 3 PC does not have DivX503Bundle.exe plugin installed to playback in MEDIA PLAYER after the file is converted to AVI format
- 4 winxp OS needs to install plugins DivX503Bundle.exe and ffdshow-20041012.exe

23、 Q: Forget password for advanced local menu or network operation

A: Solutions:

- 1 Please contact your local customer service or our headquarters for assistance. We can help you to find the solution based on the device model and program version information that you provide.

24、 Q: Can not see the preview picture the digital channel

A: Solutions:

- 1 Did not add device
- 2 The device of related channel was not enable
- 3 The device of related channel was not selected.
- 4 The selected device did not connect to video sources
- 5 The channel title of selected remote device is not exist.
- 6 Stream for remote channel was set by extra stream.
- 7 User name & password not matched
- 8 directly input with IP address or port No. incorrectly when adding device.
- 9 The resolution of added device is too large to display by the monitor.

25、 Q: Click “search” why not search out any of the device.

A: Solutions:

- 1 There is no other device exist in the local area network
- 2 The subnet mask setting incorrectly on Network settings.

26、 Q: The snapshot at alarm function was enable, why not catch picture

A: Solutions:

- 1 HDD manage without partition for snapshot.
- 2 Partition for snapshot is 0.
- 3 The snapshot function is not enable on record -> storage of related channel.

27、 The time shows on digital channel is not the same as local side:

Enable the time synchronous function of digital channel.

28、 Can not see preview picture of analog channel

A:Solutions:

- 1 The camera did not connect to video interface
- 2 The device did not connect to video source
- 3 Video source is broken.

29、 Picture will be frozen when multi-connection and shift devices.

Picture come out from digital channel need few seconds, shift device means to show new picture, so it needs several seconds to buffer.

6.2 Maintenance

- 1 In a damp environment, dust on circuit board may result in short circuits, affect the normal operation of the DVR, and even damage the DVR. For long-term stable operation of the DVR, brush off the dust on the circuit board, connectors, fans, and DVR case regularly.
- 2 Keep the equipment well grounded to avoid the interference to video/audio signal and protect the DVR from damage caused by static or induced voltage.
- 3 Do not plug/unplug A/V cable, RS-232, and RS-485 with the power on, or it could easily damage these ports.
- 4 If possible, do not use TV set on DVR's local video output (VOUT). Otherwise, it could easily damage the video output circuit in DVR.
- 5 Do not turn off the power switch to shutdown the DVR. Use the shutdown function in the menu, or on/off button on the front panel (hold it down for 3 seconds) to turn off the DVR power automatically and prevent damage to the hard drive.
- 6 Keep the DVR away from heat sources or hot places.
- 7 Keep the area around the DVR well ventilated.

Regular system inspection and maintenance are required.

Appendix 1. Mouse Operations

This document uses the mouse with a right-handed configuration as an example

This device supports a mouse with USB interface.

Operation	Functions
Left double click	During playback, double click a file in the video list to replay.
	Double click on the playback image to zoom in or out of the screen
	During preview, double click a channel to display it in full screen. Double click again to return to multi-screen
Left click mouse	Select corresponding function in menu page
Right click mouse	Pops up desktop quick launch menu in preview page
	Quick launch menu for current function during menu operation
Scroll Wheel	Turn the mouse scroll wheel to increase/decrease value in a number box
	Switch among options in combo box
	Page up or down in list box
Mouse Movement	Select the control under current coordinates or an item within the control to move it
Mouse Drag	Set areas for motion detection
	Set areas for surveillance coverage

Appendix 2. Hard Drive Capacity Calculation

When installing the DVR for the first time, make sure whether the DVR has internal hard drives mounted. Pay attention to the jumper when installing an IDE hard disk;

1、 Hard disk capacity

The DVR sets no limit on hard disk capacity. Choose a disk 10G or more. For better operation stability, we recommend the use of hard disks ranging from 120G~250G.

2、 Choose the aggregate capacity of the hard disks

Formula for calculating the capacity of a hard drive:

Total hard drive capacity (M) = number of channels × recording time desired (in Hours) × use of disk space each hour (M/Hour)

Similarly, we can derive a formula for calculating recording time:

$$\text{Recording Time (Hour)} = \frac{\text{Total HD Capacity (M)}}{\text{Use of disk space each hour (M/Hour)} \times \text{number of channels}}$$

The DVR uses MPEG4/H.264 compression technology and has a wide dynamic range. When calculating the hard disk capacity, it should use the estimated size of the files generated each hour on each channel based on bit stream statistics.

For example:

Using a 500G hard drive and recording in real-time CIF quality can sustain approximately 25 days. Use of hard disk space per hour for recording on a single channel is 200M/Hour. When recording 24 hours continuously in real-time CIF quality on 4 channels, the days it can last are: $500G / (200M/H \times 24 \text{ hours} \times 4 \text{ channels}) = 26$.